



Incident Management Mission Diagnostic (IMMD) Method



Software Engineering Institute | CarnegieMellon

© 2008 Carnegie Mellon University

Introduction and Background

The Incident Management Mission Diagnostic (IMMD) is a risk-based approach for determining the ***potential for success*** of an organization's ***incident management capability*** (IMC).

The IMMD can be viewed as an efficient, first-pass screening of an IMC to provide a quick evaluation and diagnose any unusual circumstances that might affect its potential for success.



Software Engineering Institute | CarnegieMellon

2



Software Engineering Institute | CarnegieMellon

© 2008 Carnegie Mellon University

Incident Management Capability

Incident management represents all of the functions performed in an organization to manage computer security incidents.

- **Protect** – fortification of systems and networks to decrease the potential for attacks against the organization's infrastructure
- **Detect** – reactive and proactive collection and analysis of information relative to potential weaknesses and attacks to determine if the infrastructure is being or could be attacked
- **Respond** – acting upon information to prevent, contain, or repair the infrastructure and enable the organization to resume or maintain operations
- **Sustain** – manage and continue the overall effectiveness of the incident management capability

An **incident management capability** presents all of the groups of people who perform incident management activities for an organization.

Mission Diagnostic Protocol

The IMMD is derived from the **Mission Diagnostic Protocol** (MDP).

The MDP is a risk-based assessment for evaluating current conditions and determining whether a project or process is on track for success.

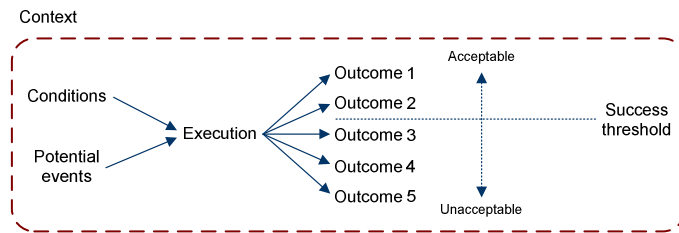
- one of the assessments included in the SEI Mission-Oriented Success Analysis and Improvement Criteria (MOSAIC), a management approach for establishing and maintaining confidence that objectives will be successfully achieved

Mission risk represents the range of outcomes for a given set of IMC objectives, based on current conditions, potential events, context, and how IMC functions are executed.

Potential for Success

An IMC's **potential for success** is the likelihood that an IMC's outcome will be viewed as successful.

The dividing line between acceptable and unacceptable outcomes is the **success threshold**.



IMMD Drivers

The potential for success is based on a finite set of current conditions – a limited set of **drivers** used to estimate the current IMC health relative to a defined benchmark.

Decision-makers can determine if the current state of their IMC is acceptable, or if actions are required to improve the situation.

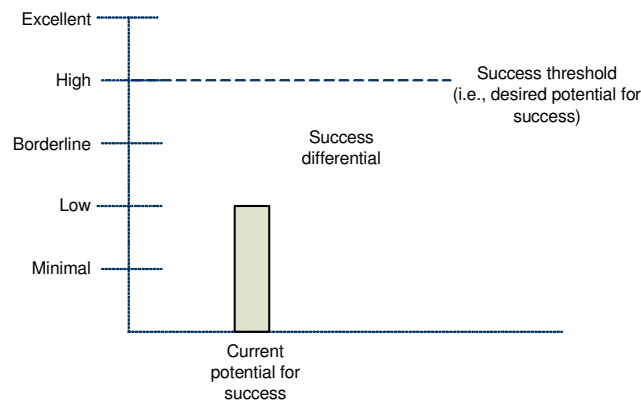
The IMM Drivers

1. realistic and well-articulated goals
2. effective communication and information sharing
3. well-understood customer needs and requirements
4. organizational and political conditions that facilitate completion of IMC activities
5. operational processes that support efficient and effective process execution of IMC activities
6. IMC management that facilitates execution of tasks and activities
7. efficient and effective task execution
8. sufficient staffing and funding for all IMC activities
9. adequate technological and physical infrastructure
10. effectively managed changing circumstances and unpredictable events



Success Profile

A **success profile** depicts an IMC's current potential for success in relation to its desired, or target, potential for success.



IMMD Method – 3 Phases, 15 Activities

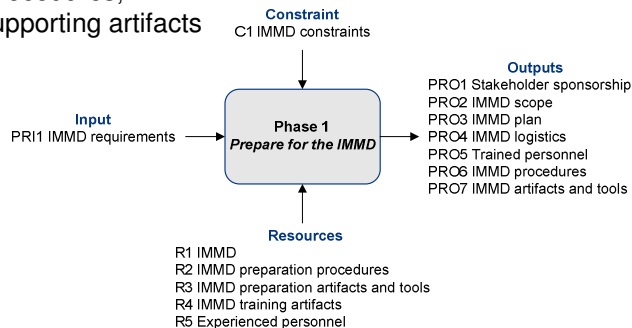


Develop stakeholder sponsorship	Gather data from people	Communicate results
Set IMMD scope	Gather data from documentation	Conduct postmortem
Develop IMMD plan	Evaluate drivers	Implement improvements
Coordinate logistics	Apply analysis	
Train personnel	Establish success profile	
Tailor IMMD	Determine next steps	

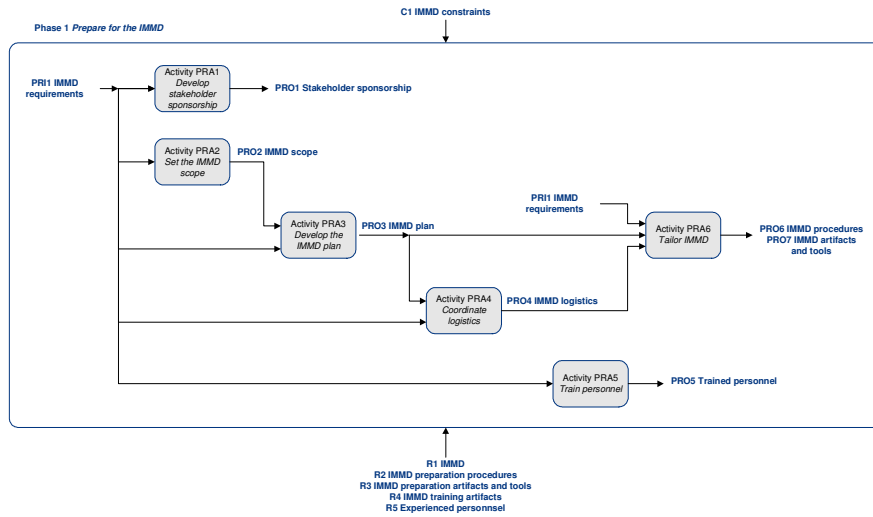


Phase 1: Prepare for the IMMD

- Develop stakeholder sponsorship
- Set the IMMD scope
- Develop the IMMD plan
- Coordinate logistics
- Train personnel
- Tailor IMMD procedures, criteria, and supporting artifacts

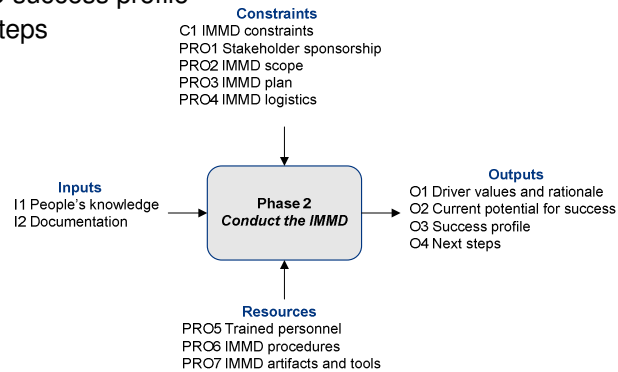


Phase 1: Prepare Data Flow

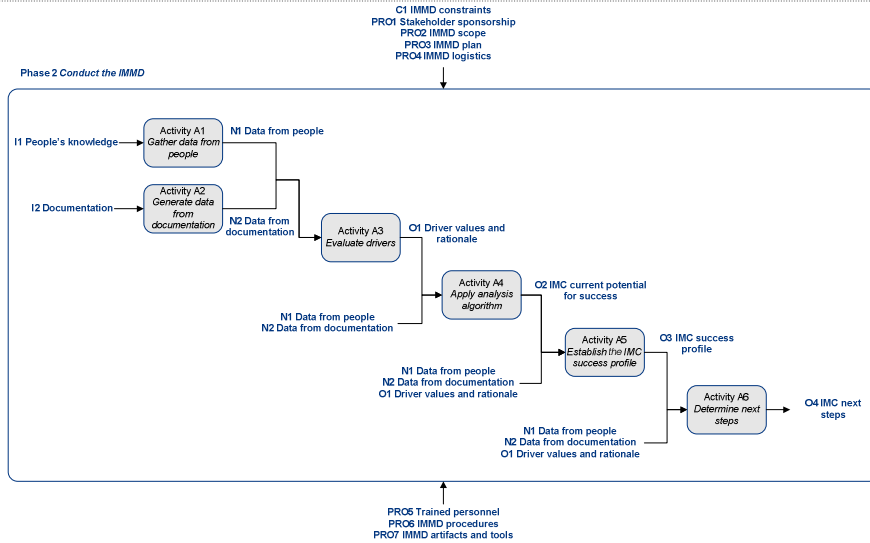


Phase 2: Conduct the IMM

- Gather data from people
- Gather data from documentation
- Evaluate drivers
- Apply analysis algorithm
- Establish the IMC success profile
- Determine next steps

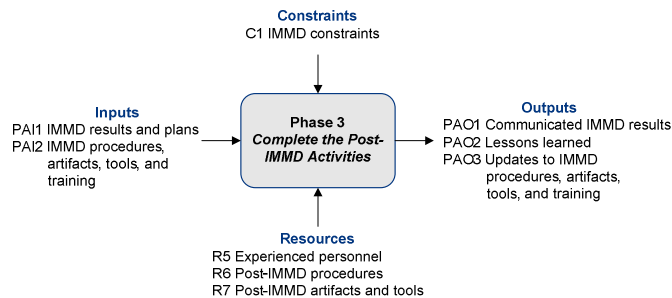


Phase 2: Conduct IMMD Data Flow

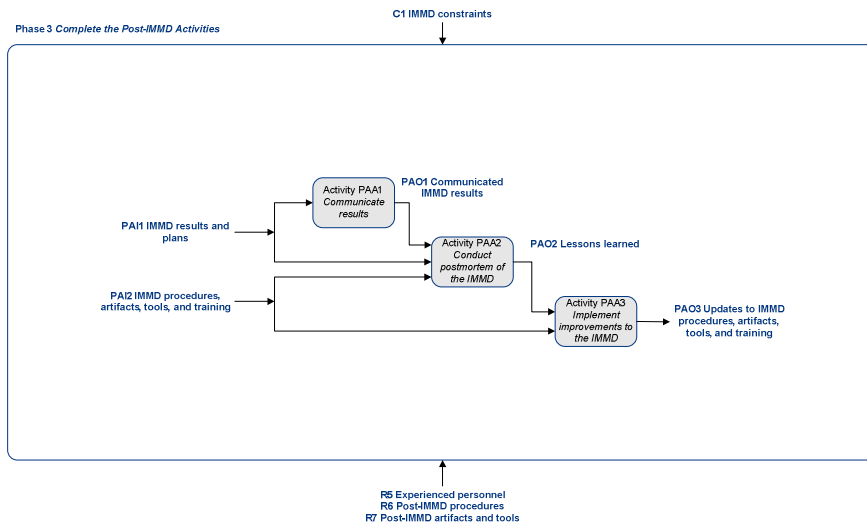


Phase 3: Complete the Post-IMMD Activities

- Communicate results
- Conduct postmortem of the IMMD
- Implement improvements to the IMMD process



Phase 3: Post-IMMD Data Flow



Worksheets

IMMD Preparation Checklist

- items that must be accomplished during the Phase 1 activities

IMMD Scope List

- the groups and specific individuals to be interviewed

IMMD Questionnaire

- the drivers used to direct the interview session

IMMD Handout

- the drivers as questions with additional explanation

IMMD Document Checklist

- documents to be collected and reviewed

IMMD Worksheet

- evaluating and scoring the drivers, the rationale, and the final results

IMC Improvement Worksheet

- for considering and documenting improvements



Sample Results -1

Driver Question	Answer					Value
	No	Likely No	Equally Likely Yes or No	Likely Yes	Yes	
1. Are the IMC's goals realistic and well-articulated?	----- ----- -----X-----					<u>7.5</u>
Rationale						
<ul style="list-style-type: none"> + The IMC mission and goals are published to all constituents. + All personnel, stakeholders, and constituents understand the goals of the IMC. - Current funding and staffing resources are strained to meet IMC objectives. 						

Data Item Value	Effect on the IMC Mission
+	positive influence and is driving the IMC toward success (success driver)
-	negative effect on the IMC and is driving the IMC toward failure (failure driver)
0	no perceived influence and is not driving the IMC toward either success or failure (neutral driver)
?	could be significant to either success or failure but cannot currently be determined (unknown driver)



Sample Results -2

IMC Current Potential for Success is **HIGH** Total Value: **70**

Current Potential for Success	Minimal	Low	Borderline	High	Excellent
Total Value	0-14	15-34	35-64	65-84	85-100
Success Threshold	Minimal	Low	Borderline	High	Excellent

Total Points	Success Threshold	Description
85-100	Excellent	The strength of the mission's success drivers is very high. This is an indication that the mission's outcome is expected to be a success.
65-84	High	The strength of the mission's success drivers is high. This is an indication that the mission's outcome is more likely to be a success than a failure.
35-64	Borderline	The strength of the mission's success drivers is moderate. This is an indication that the mission's outcome is equally likely to be a success or a failure.
15-34	Low	The strength of the mission's success drivers is low. This is an indication that the mission's outcome is more likely to be a failure than a success.
0-14	Minimal	The strength of the mission's success drivers is very low. This is an indication that the mission's outcome is expected to be a failure.



Resources

IMMD and MDP

- Incident Management Mission Diagnostic Method, Version 1.0
<http://www.cert.org/archive/pdf/08tr007.pdf>
- Mission Diagnostic Protocol, Version 1.0
<http://www.sei.cmu.edu/pub/documents/08.reports/08tr005.pdf>

IMC

- Incident Management Capability Metrics, Version 0.1
<http://www.cert.org/archive/pdf/07tr008.pdf>
- Defining Incident Management Processes for CSIRTs:
A Work in Progress
<http://www.cert.org/archive/pdf/04tr015.pdf>
- Handbook for CSIRTs, Second Edition
<http://www.cert.org/archive/pdf/csirt-handbook.pdf>
- Organizational Models for CSIRTs
<http://www.cert.org/archive/pdf/03hb001.pdf>
- State of the Practice of CSIRTs
<http://www.cert.org/archive/pdf/03tr001.pdf>



Contact Information

CERT CSIRT Development Team

Web: <http://www.cert.org/csirts/>

Email: csirt-info@cert.org

CERT® Program
Software Engineering Institute
Carnegie Mellon University
4500 Fifth Avenue
Pittsburgh PA 15213 USA

