



Instituto Nacional  
de Tecnologías  
de la Comunicación

## NATIONAL NETWORK FOR SPAM MONITORING

**Juan Díez González**

*Security Technician - INTECO-CERT*

*April, 2008*

**20th Annual FIRST Conference on Computer  
Security Incident Handling**



## 1. INTECO and INTECO-CERT

## 2. Spam Monitoring Network

### 1. Sensors Network in Spain

### 2. Spam Network description

#### 1. Client side

#### 2. Server side

#### 3. Portal side

### 3. Spam Web site

### 4. Problems found

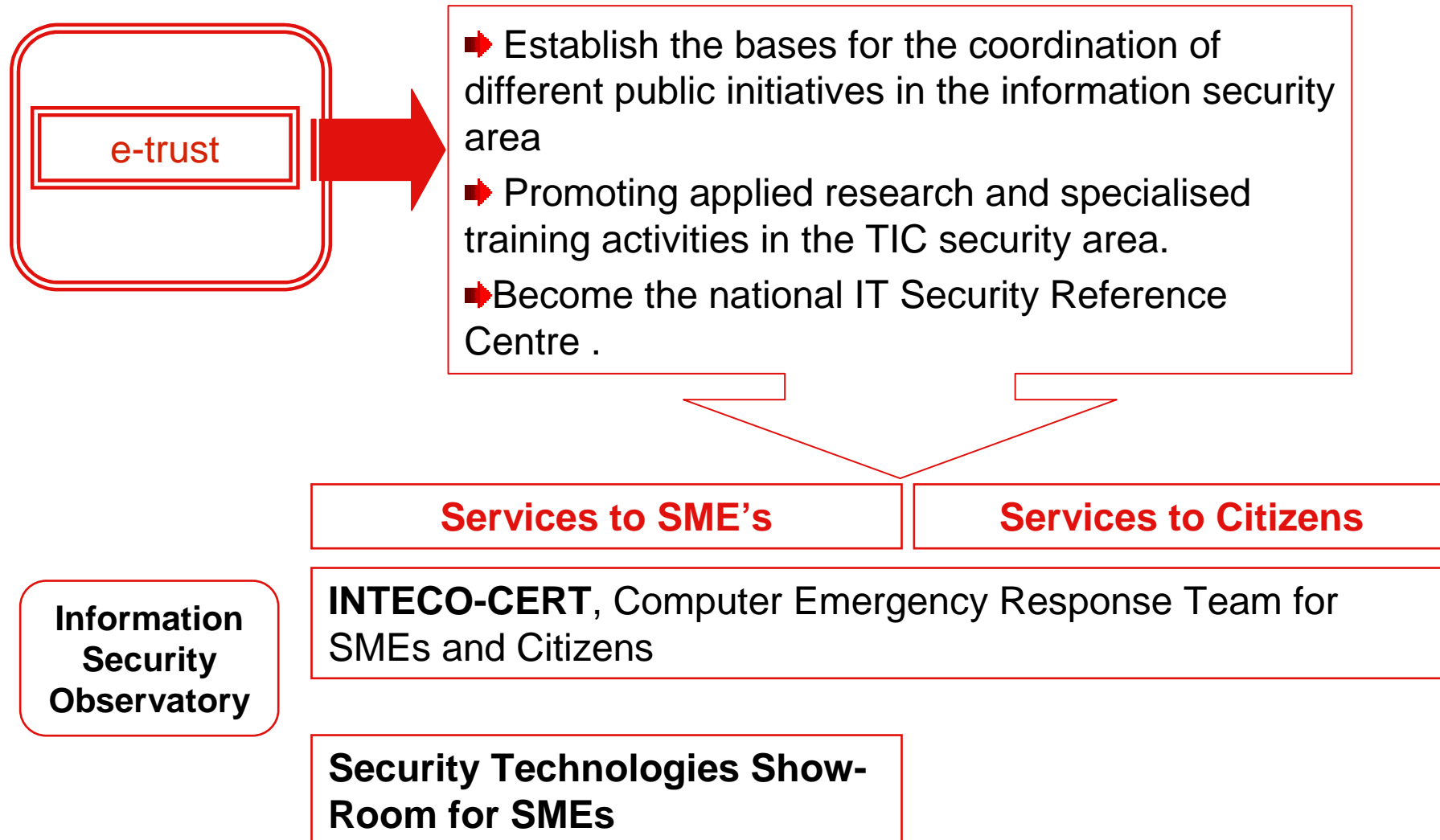
## The National Communications Technology Institute

- ✓ Promoted by the Ministry of Industry, Tourism and Trade,
- ✓ Platform for the development of the Knowledge Society
- ✓ **Foundation:** projects in the innovation and technology area.



- ✓ Convergence of the Spanish and European Information Society
- ✓ Promotion of regional development creating a high innovation "Cluster-TIC"
- ✓ Create communications solutions for companies and individuals.
- ✓ Consolidate as the main Spanish centre of innovative and reference programs and projects.

## INTECO Security programs



## INTECO-CERT. Objectives

- ➡ Increase the level of awareness in the security area and enforce the usage of security solutions for SMEs and homes.
- ➡ Provide provision of reactive and preventive services and procedures for security incidents.
- ➡ Present training facilities on technology and information security.
- ➡ Provide best practices, recommendations and advice.
- ➡ Show available security solutions for SMEs and citizens

- ➡ Information Services:
  - Subscription to security reports, alerts
  - News, events
  - Online virus warnings, software vulnerabilities, **spam**.
- ➡ Training Services: Tutorials, manuals, online courses.
- ➡ Protection Services: free tools, software updates.
- ➡ Response and Support Services:
  - Security Incidents management.
  - Malware infections.
  - Phishing attacks.
  - Legal support.
  - Security forums.



## Objectives

- ➡ To obtain real-time information about SPAM to give a general view about how spam affects organizations and citizens
- ➡ To compare this information with other available sources of information on malware
- ➡ To share this information with other interested organizations

How?

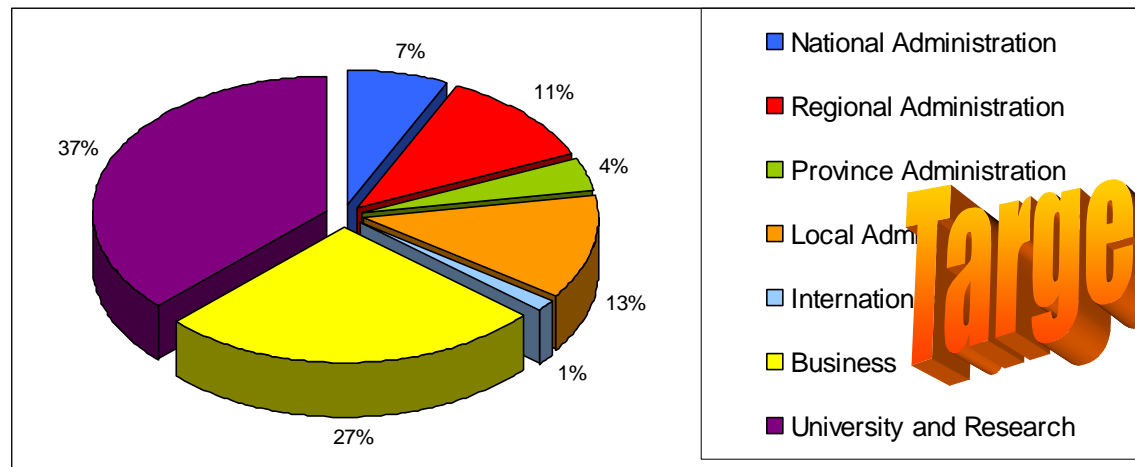


**INTECO's Sensor  
Network**

## Sensors Network in Spain



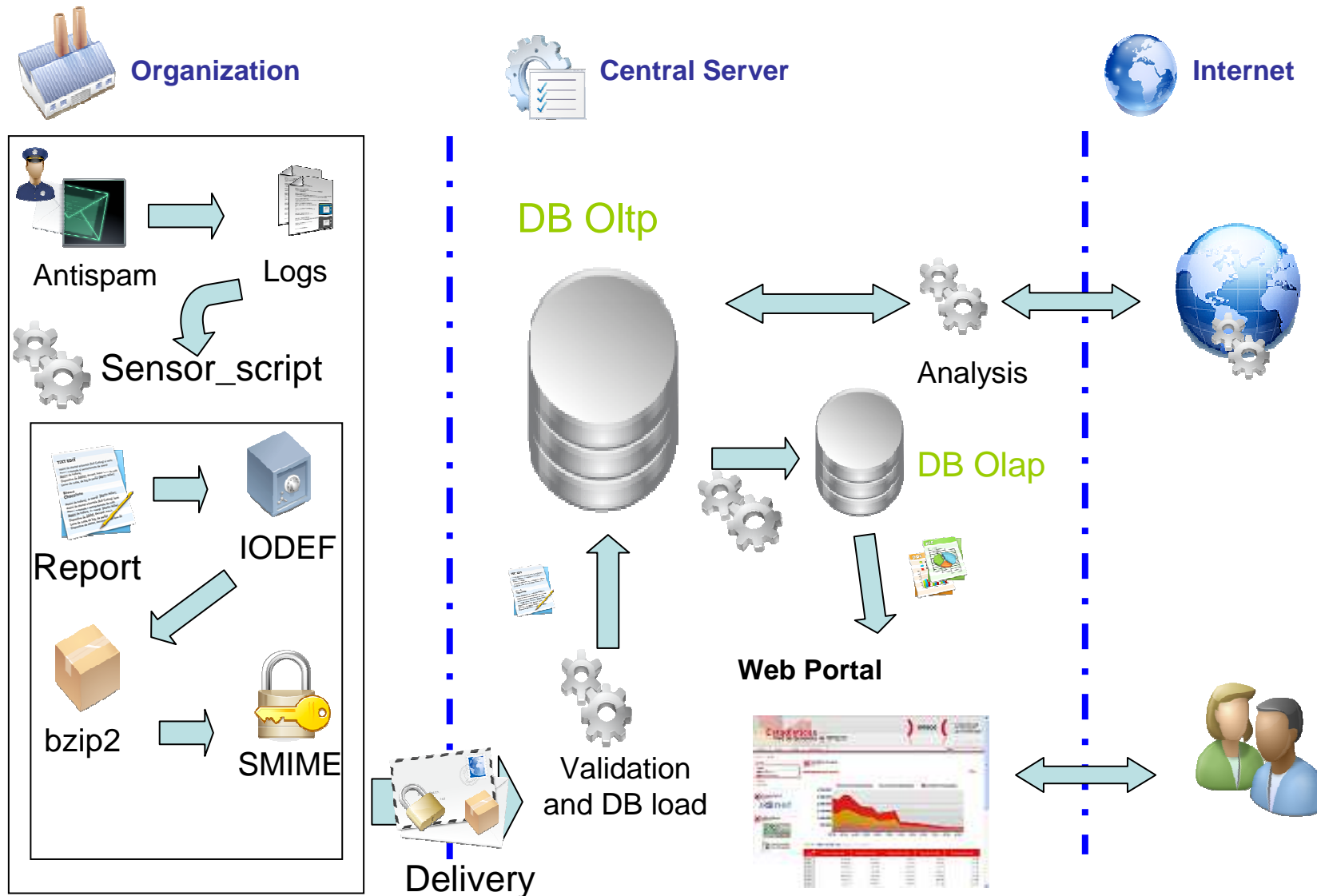
- ➔ More than **150** organizations → more than **100 million** real e-mails processed per day.
- ➔ More than 5 years used to get **virus detection** information
- ➔ **2,26%** infected e-mails detected in almost 30 billion ones analyzed

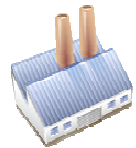


**Target: SPAM**

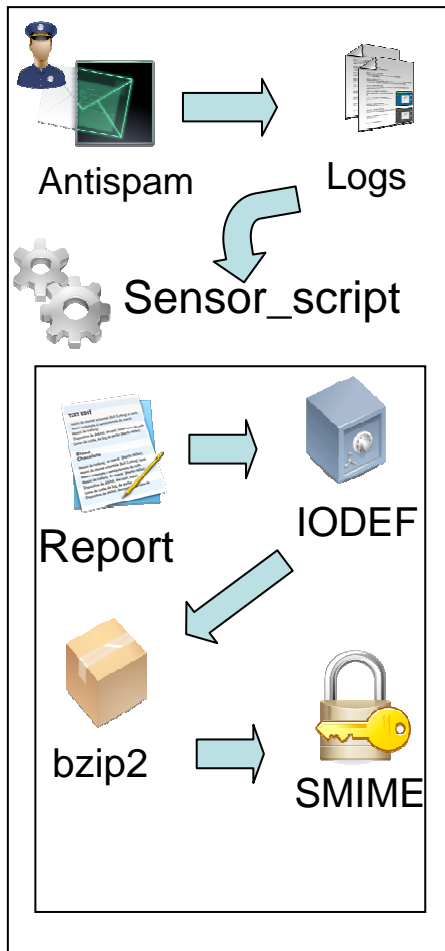


# Functional Diagram





## Organization



- Written in Perl.
- Tailored for every organization
- Spam detection Report using:
  - IODEF format
  - Zip or Bzip2 compression
  - SMIME delivery

- Report Contains:
  - Report Info. Date, server ...
  - Totals Section
    - Per hour
    - Per method
  - Email origin IP for every email
  - Detection method used for every IP

# Sensor Script



Instituto Nacional de Tecnologías de la Comunicación

## Report



```

Organizacion:
ASN:
Sensor:
Fecha:
Tipo Origen:
Version:
    
```

```

Nombre_Organización
Número_ASN
Nombre del Sensor
AAAA-MM-DDTHH:MM:SS+UMT
postfix
3.0
2007-02-08T11:33:48+01:00
2007-02-08T11:35:31+01:00
    
```

### Header

```

Fecha inicio:
Fecha final:
Numero de relays:
Mensajes Procesados:
Spam Detectado:
Spam Pasado:
Spam Rechazado:
Spam Declarado:
Spam por Analisis de Contenido:
Spam por Politica de Conexion:
Spam por otro metodo:
    
```

### Summary

| Metodo          | Procesados | Detectados | Rechazados | Declarados | Contenido | Conexion | Otros | %     |
|-----------------|------------|------------|------------|------------|-----------|----------|-------|-------|
| Bogofilter      |            |            |            | 25         | 25        |          |       | 86.21 |
| DSBL            | 4          | 4          |            | 13.79      |           |          |       |       |
| 2007-02-08T11   | 37         | 29         | 29         | -1         | -1        | -1       | -1    | 78.38 |
| Relay           | Procesados | Detectados | Rechazados | Declarados | Contenido | Conexion | Otros |       |
| 127.0.0.4       | 25         | 25         | 25         | -1         | -1        | -1       | -1    |       |
| 127.0.0.2       | 4          | 4          | 4          | -1         | -1        | -1       | -1    |       |
| 83.113.61.243   | 1          | 0          | 0          | -1         | -1        | -1       | -1    |       |
| 81.4.161.50     | 1          | 0          | 0          | -1         | -1        | -1       | -1    |       |
| 62.42.230.12    | 1          | 0          | 0          | -1         | -1        | -1       | -1    |       |
| 61.229.107.225  | 1          | 0          | 0          | -1         | -1        | -1       | -1    |       |
| 218.81.159.46   | 1          | 0          | 0          | -1         | -1        | -1       | -1    |       |
| 172.18.0.127    | 1          | 0          | 0          | -1         | -1        | -1       | -1    |       |
| 202.190.152.140 | 1          | 0          | 0          | -1         | -1        | -1       | -1    |       |
| 82.194.72.78    | 1          | 0          | 0          | -1         | -1        | -1       | -1    |       |

Ips

```

Relay
Metodos
127.0.0.2 DSBL
127.0.0.4 Bogofilter
    
```

### Methods

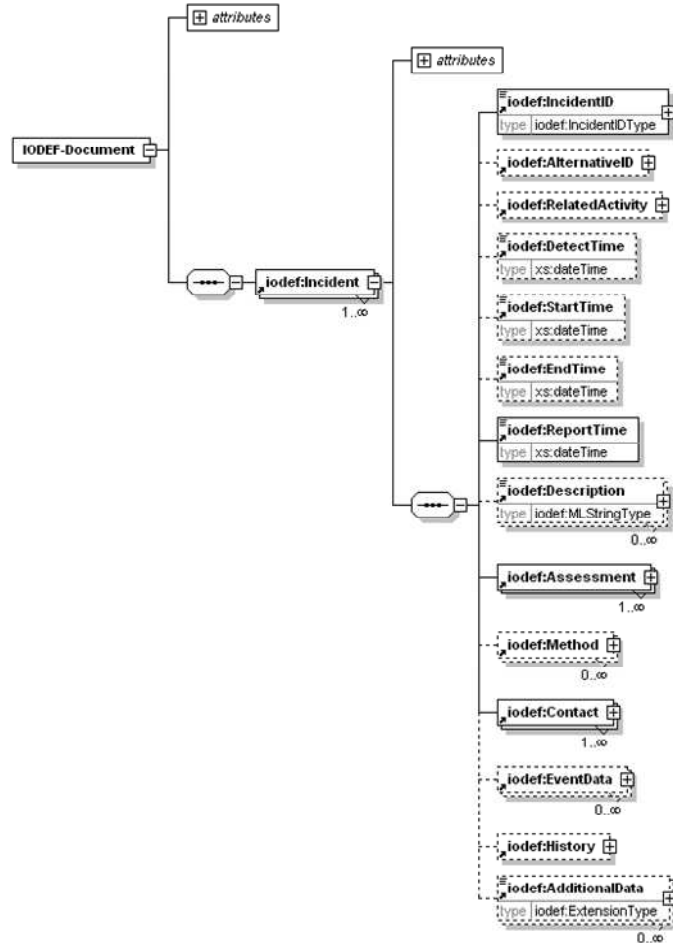


## IODEF format

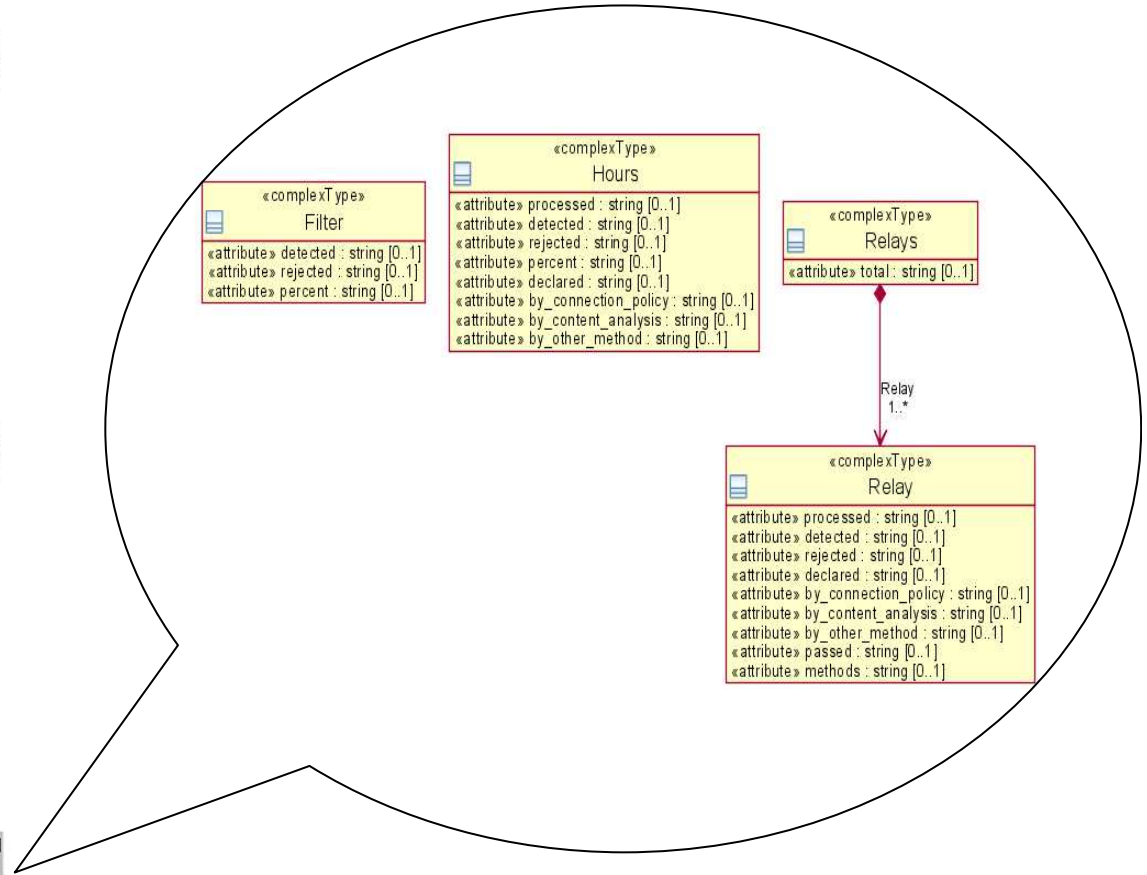
- ➡ IODEF (*Incident Object Description Exchange Format*), defines a data representation to exchange security incidents among different CSIRT.
  - ➡ XML Syntax.
  - ➡ Contains security incidents information
- 
- ➡ Advantages.
  - ➡ Increased automation in incident data processing, since the resources of security analysts to parse free-form textual documents will be reduced;
  - ➡ Decreased effort in standardizing similar data (even when highly structured) from different sources;
  - ➡ Common format on which interoperable tools for incident handling and subsequent analysis can be built, specifically when data comes from multiple constituencies.



## IODEF schema



➡ Basic Model



➡ Specific Extension



## IODEF Report



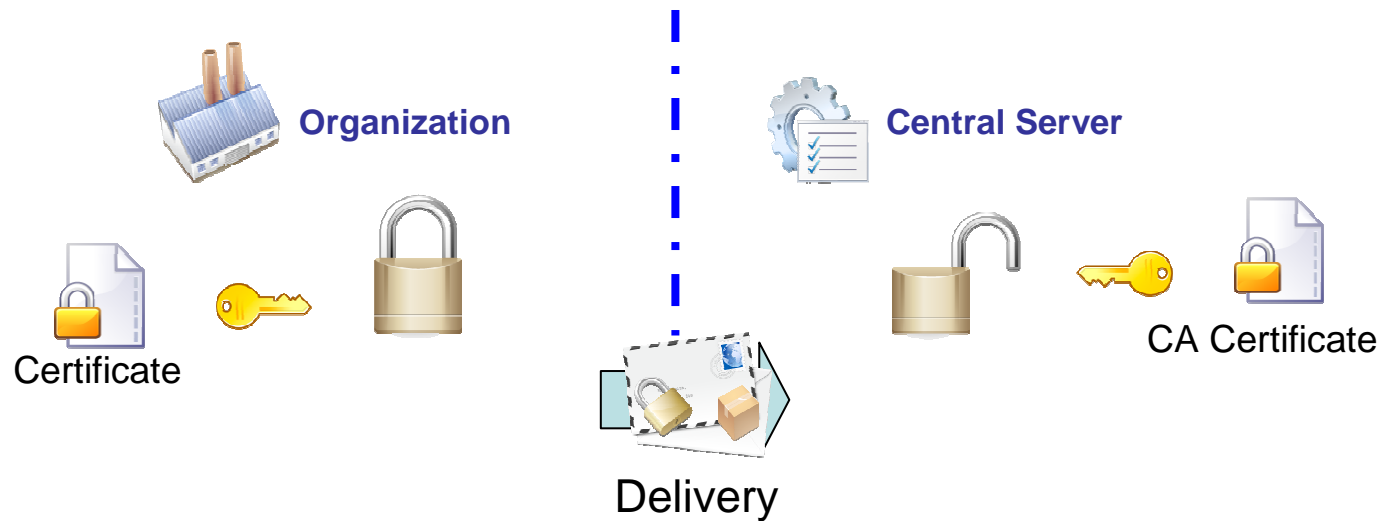
Spam report



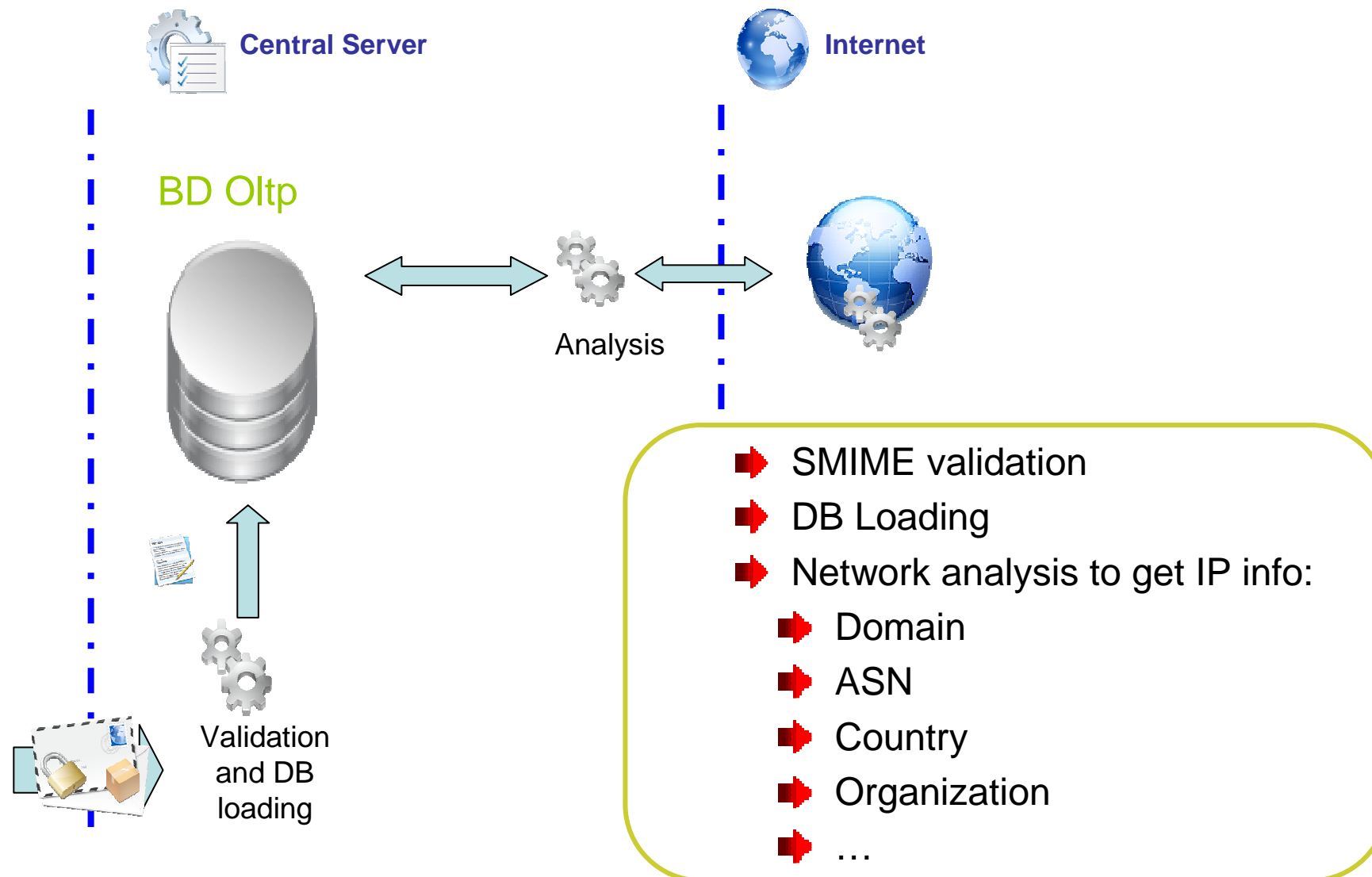
```
<?xml version="1.0" encoding="UTF-8" ?>
<IODEF-Document version="1.00" lang="en" formatid="sanet-2.1"
xmlns="urn:ietf:params:xml:ns:io-def-1.0">
  <Incident purpose="ext-value" ext-purpose="spam-reporting">
    <IncidentID name="misensor1">2006-01-18T01:59:33+01:00</IncidentID>
    <StartTime>2006-01-18T01:59:02+01:00</StartTime>
    <EndTime>2006-01-18T01:59:33+01:00</EndTime>
    <ReportTime>2006-01-18T00:00:00+01:00</ReportTime>
    <Description>Spam report from Postfix mail server</Description>
    <Assessment>
      <Impact lang="en" severity="low" completion="failed" type="unknown" />
    </Assessment>
    <Contact role="creator" type="organization">
      <ContactName>ejemplo.es</ContactName>
      <Email>pepito@ejemplo.es</Email>
    </Contact>
    <EventData>
      <Method>
        <Reference>
          <ReferenceName>e-mail</ReferenceName>
        </Reference>
      </Method>
      <Flow>
        <System category="sensor">
          <Node>
            <Address category="asn">22</Address>
            <Location>Madrid-Spain</Location>
            <NodeRole category="mail" />
            <Counter type="message" meaning="processed">236</Counter>...
            <Counter type="message" meaning="by_connection_policy">3</Counter>
            <Counter type="ext-value" ext-type="percent"
meaning="by_connection_policy">100.00</Counter>
            <Counter type="message" meaning="rejected">44</Counter>
          </Node>
        </System>
      </Flow>
      <Expectation action="nothing" />
      <AdditionalData type="xml">
        <Filter detected="2" rejected="2" percent="66.67">SpamHouse</Filter>
        <Filter detected="1" rejected="1" percent="33.33">NoDamain</Filter>
        <Hours processed="236" detected="3" rejected="3" percent="1.27">2007-02-08T11</Hours>
        <Relays total="223">
          <Relay processed="4" detected="0" rejected="0" declared="0">200.73.246.219</Relay>
          <Relay processed="4" detected="3" rejected="2" declared="0" by_connection_policy="3"
by_content_analysis="0" methods="SpamHouse, SpamCop">72.184.53.128</Relay>
        </Relays>
      </AdditionalData>
    </EventData>
  </Incident>
</IODEF-Document>
```



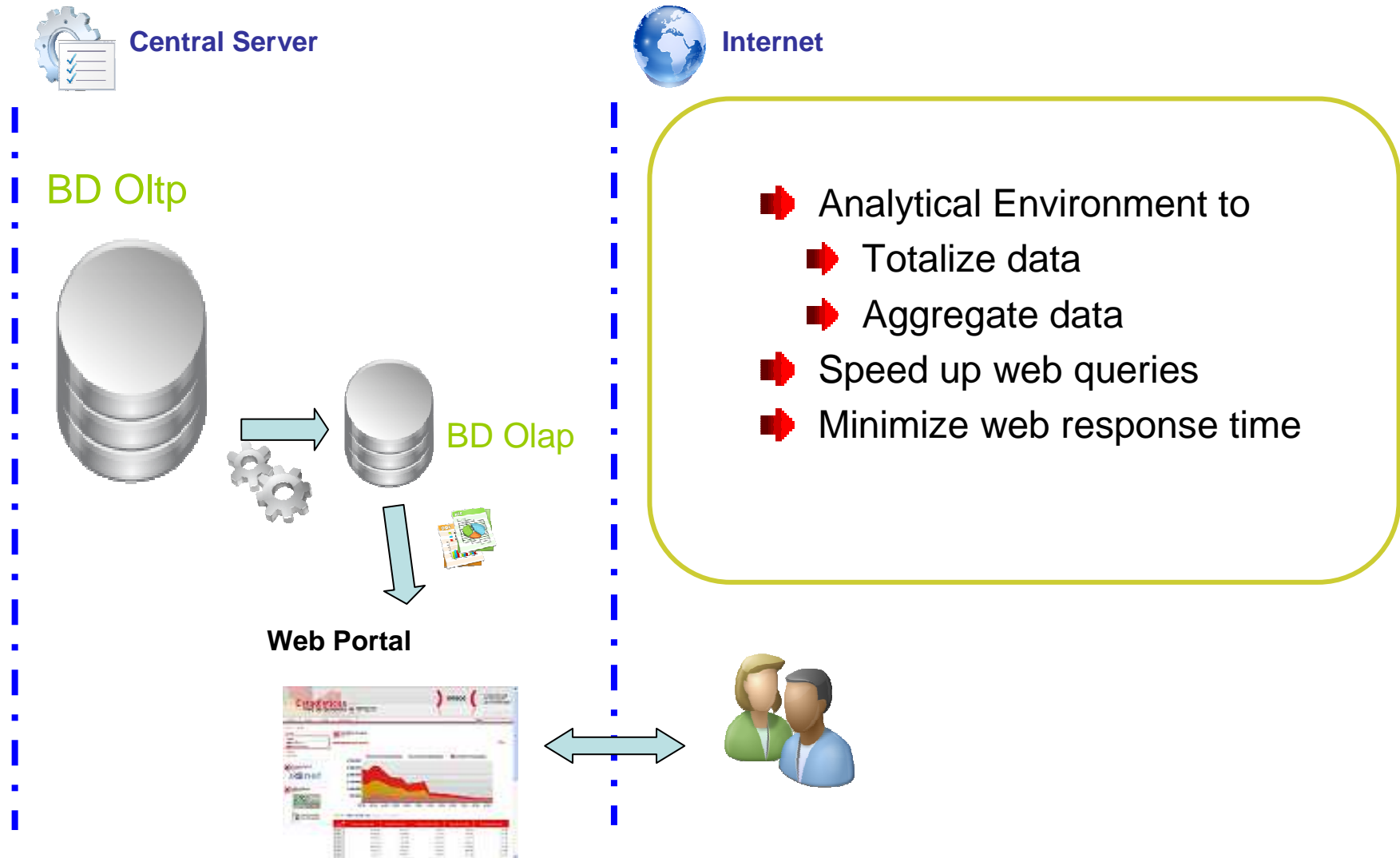
## SMIME Delivery



- ➡ INTECO-CERT CA certificate used to:
  - ➡ Generate one cert per organization
  - ➡ Sign every report on SMIME delivery
  - ➡ Verify digital signature on the central server reception









**Joomla!**<sup>TM</sup>

...because open source matters

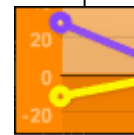
**Spam Statistics  
Custom Component**

- Powerful CMS (specially 1.5)
- Free (as in freedom) software
- Big supporting community
- Fast development (using Joomla API)
- Modular for new interface addition (web service?)
- Easily extensible (thanks to OOP)



### xajax:

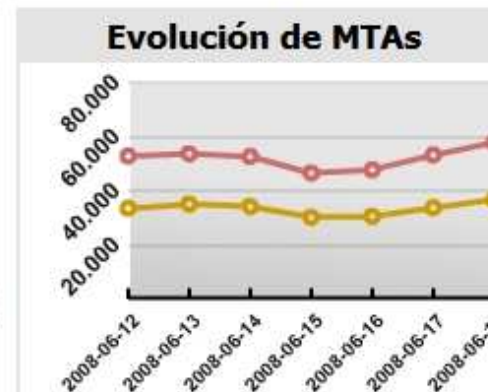
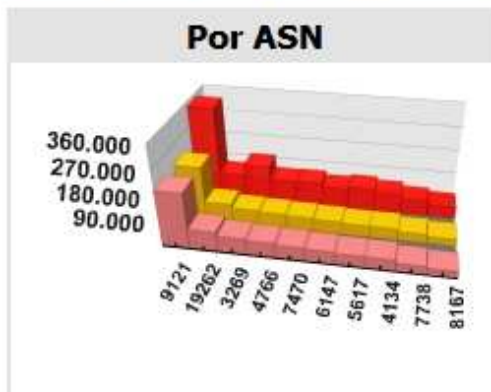
- Fast AJAX development.
- Easy to integrate if server code is modular.
- ☹ Not fully customizable.
- ☹ Not accessible.



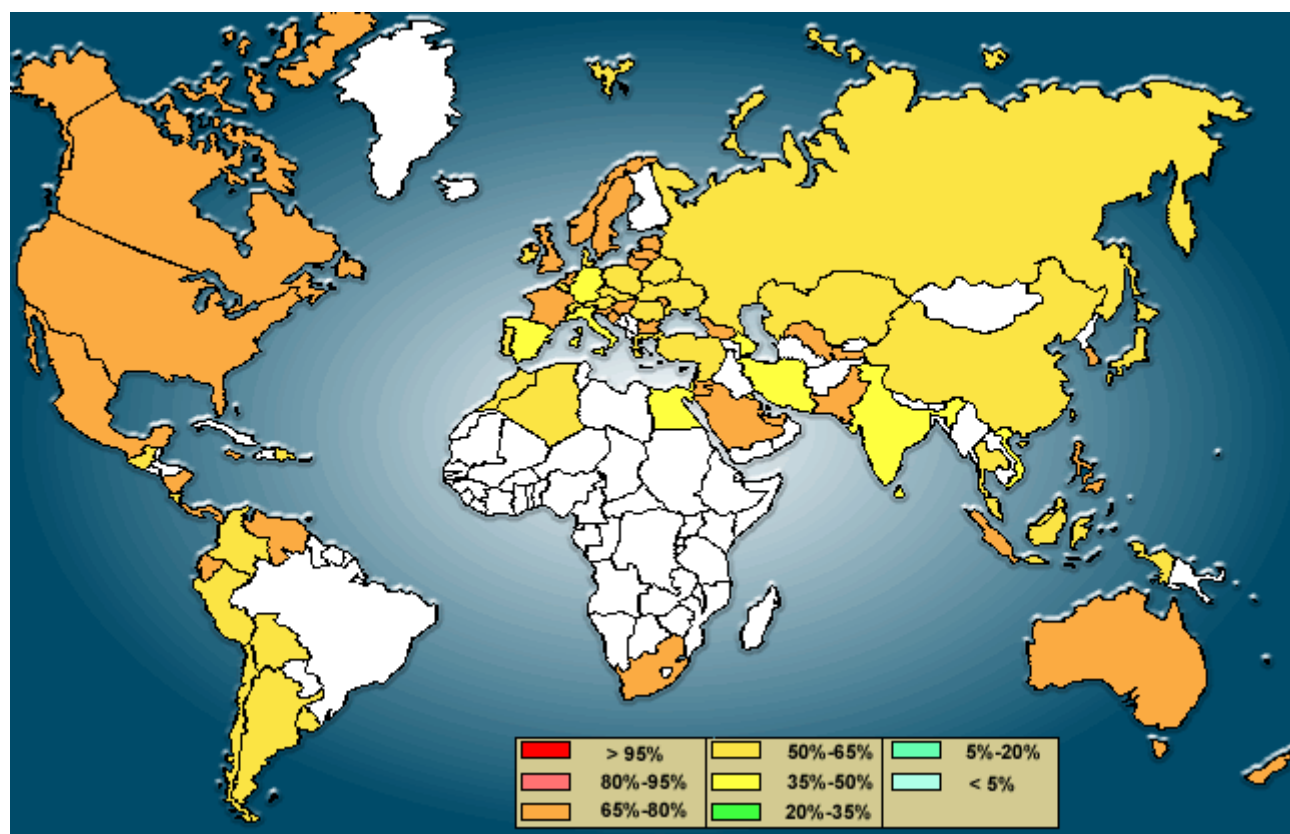
### PHP/SWF Charts

### PHP/SWF:

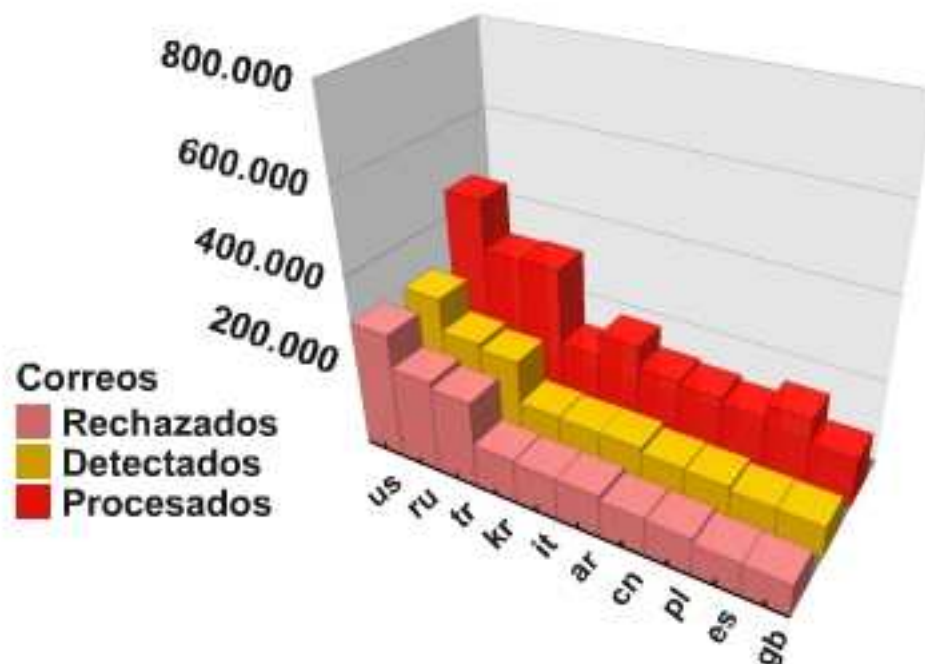
- Eye-catching flash charts
- Totally customizable.
- PHP API for easy configuration.
- Not free, but cheap.



# World map: SPAM by COUNTRY



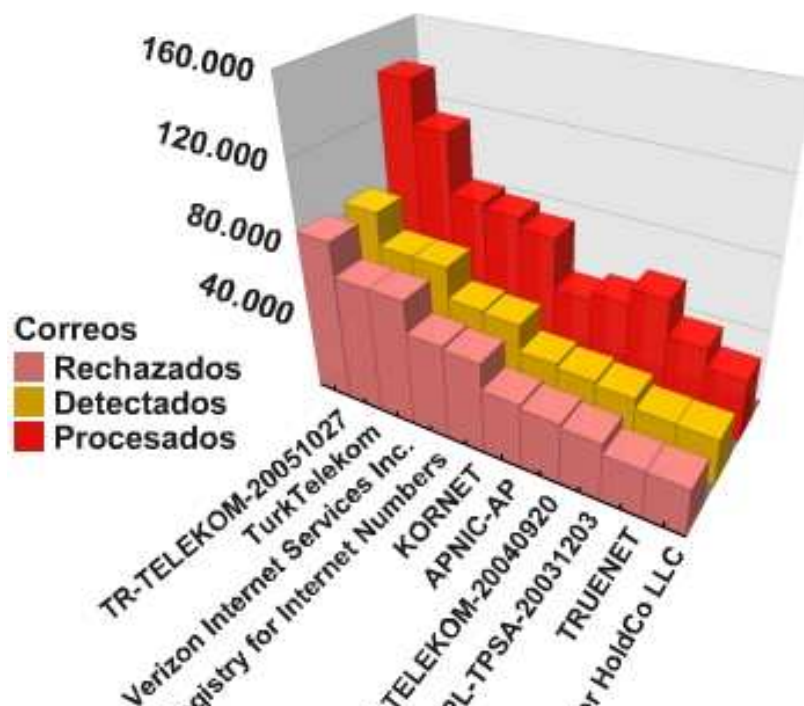
# Interactive bar chart: SPAM by COUNTRY



|                              |           |
|------------------------------|-----------|
| Total de Mensajes Procesados | 4.056.400 |
| Total de Spam Detectado      | 2.401.292 |
| Porcentaje de Spam Detectado | 59,2 %    |
| Total de Spam Rechazado      | 2.401.292 |
| Porcentaje de Spam Rechazado | 59,2 %    |

| Código | País                      | Correos Procesados | Spam Detectado | % Spam Detectado | Spam Rechazado | % Spam Rechazado |
|--------|---------------------------|--------------------|----------------|------------------|----------------|------------------|
| us     | Estados Unidos de América | 460.668            | 299.020        | 64,9 %           | 299.020        | 64,9 %           |
| ru     | Rusia                     | 340.332            | 219.888        | 64,6 %           | 219.888        | 64,6 %           |
| tr     | Turquía                   | 344.723            | 206.688        | 60,0 %           | 206.688        | 60,0 %           |
| kr     | Corea del Sur             | 162.292            | 105.668        | 65,1 %           | 105.668        | 65,1 %           |
| it     | Italia                    | 214.926            | 102.372        | 47,6 %           | 102.372        | 47,6 %           |
| ar     | Argentina                 | 163.450            | 101.726        | 62,2 %           | 101.726        | 62,2 %           |
| cn     | República Popular China   | 154.770            | 90.236         | 58,3 %           | 90.236         | 58,3 %           |
| pl     | Polonia                   | 143.525            | 87.146         | 60,7 %           | 87.146         | 60,7 %           |
| es     | España                    | 175.760            | 77.020         | 43,8 %           | 77.020         | 43,8 %           |
| gb     | Reino Unido (en desuso)   | 114.427            | 75.775         | 66,2 %           | 75.775         | 66,2 %           |

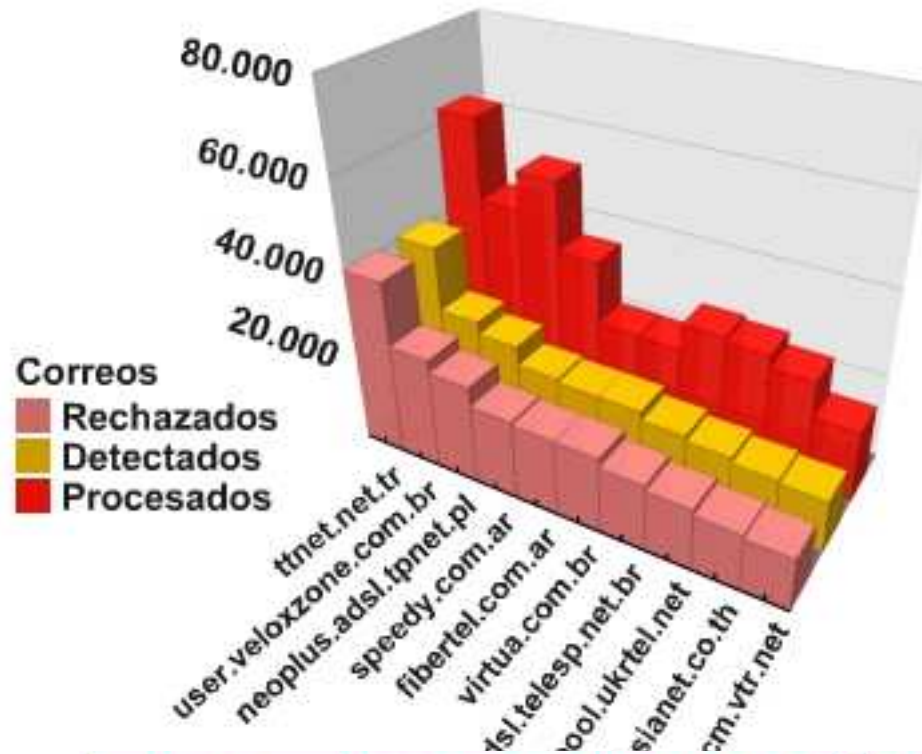
# Interactive bar chart: SPAM by ORGANIZATION



|                              |           |
|------------------------------|-----------|
| Total de Mensajes Procesados | 4.060.269 |
| Total de Spam Detectado      | 2.403.236 |
| Porcentaje de Spam Detectado | 59,2 %    |
| Total de Spam Rechazado      | 2.403.236 |
| Porcentaje de Spam Rechazado | 59,2 %    |

| Organización                           | Correos Procesados | Spam Detectado | % Spam Detectado | Spam Rechazado | % Spam Rechazado |
|--|--------------------|----------------|------------------|----------------|------------------|
| TR-TELEKOM-20051027                    | 140.551            | 85.808         | 61,1 %           | 85.808         | 61,1 %           |
| TurkTelekom                            | 118.061            | 67.890         | 57,5 %           | 67.890         | 57,5 %           |
| Verizon Internet Services Inc.         | 86.487             | 67.775         | 78,4 %           | 67.775         | 78,4 %           |
| American Registry for Internet Numbers | 83.355             | 50.710         | 60,8 %           | 50.710         | 60,8 %           |
| KORNET                                 | 78.218             | 49.324         | 63,1 %           | 49.324         | 63,1 %           |
| APNIC-AP                               | 50.637             | 34.980         | 69,1 %           | 34.980         | 69,1 %           |
| TR-TELEKOM-20040920                    | 55.095             | 33.126         | 60,1 %           | 33.126         | 60,1 %           |
| PL-TPSA-20031203                       | 63.340             | 31.214         | 49,3 %           | 31.214         | 49,3 %           |
| TRUENET                                | 44.043             | 25.675         | 58,3 %           | 25.675         | 58,3 %           |
| Road Runner HoldCo LLC                 | 33.901             | 25.468         | 75,1 %           | 25.468         | 75,1 %           |

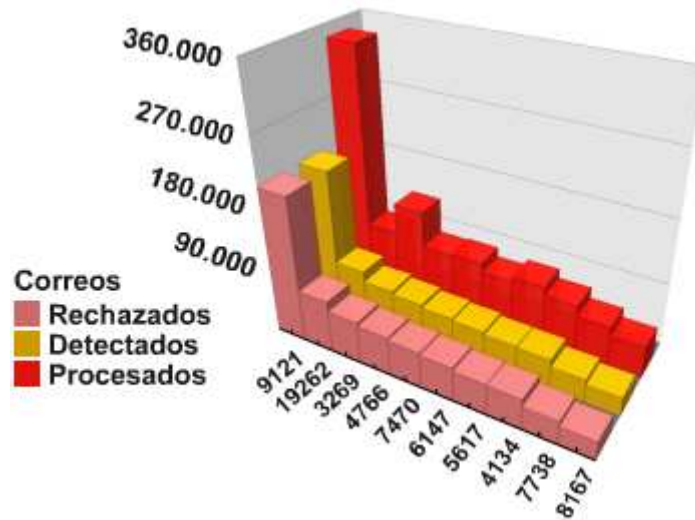
# Interactive bar chart: SPAM by DOMAIN



|                              |           |
|------------------------------|-----------|
| Total de Mensajes Procesados | 2.569.862 |
| Total de Spam Detectado      | 1.524.873 |
| Porcentaje de Spam Detectado | 59,3 %    |
| Total de Spam Rechazado      | 1.524.873 |
| Porcentaje de Spam Rechazado | 59,3 %    |

| Dominio               | Correos Procesados | Spam Detectado | % Spam Detectado | Spam Rechazado | % Spam Rechazado |
|-----------------------|--------------------|----------------|------------------|----------------|------------------|
| ttnet.net.tr          | 63.120             | 40.570         | 64,3 %           | 40.570         | 64,3 %           |
| user.veloxzone.com.br | 44.677             | 25.837         | 57,8 %           | 25.837         | 57,8 %           |
| neoplus.adsl.tpnet.pl | 53.467             | 23.003         | 43,0 %           | 23.003         | 43,0 %           |
| speedy.com.ar         | 37.402             | 18.515         | 49,5 %           | 18.515         | 49,5 %           |
| fibertel.com.ar       | 22.979             | 17.780         | 77,4 %           | 17.780         | 77,4 %           |
| virtua.com.br         | 22.779             | 17.768         | 78,0 %           | 17.768         | 78,0 %           |
| dsl.telesp.net.br     | 28.745             | 15.608         | 54,3 %           | 15.608         | 54,3 %           |
| pool.ukrtel.net       | 27.864             | 14.400         | 51,7 %           | 14.400         | 51,7 %           |
| revip2.asianet.co.th  | 24.990             | 13.125         | 52,5 %           | 13.125         | 52,5 %           |
| cm.vtr.net            | 16.702             | 12.360         | 74,0 %           | 12.360         | 74,0 %           |

# Interactive bar chart: SPAM by ASN



|                              |           |
|------------------------------|-----------|
| Total de Mensajes Procesados | 4.356.601 |
| Total de Spam Detectado      | 2.571.799 |
| Porcentaje de Spam Detectado | 59,0 %    |
| Total de Spam Rechazado      | 2.571.799 |
| Porcentaje de Spam Rechazado | 59,0 %    |

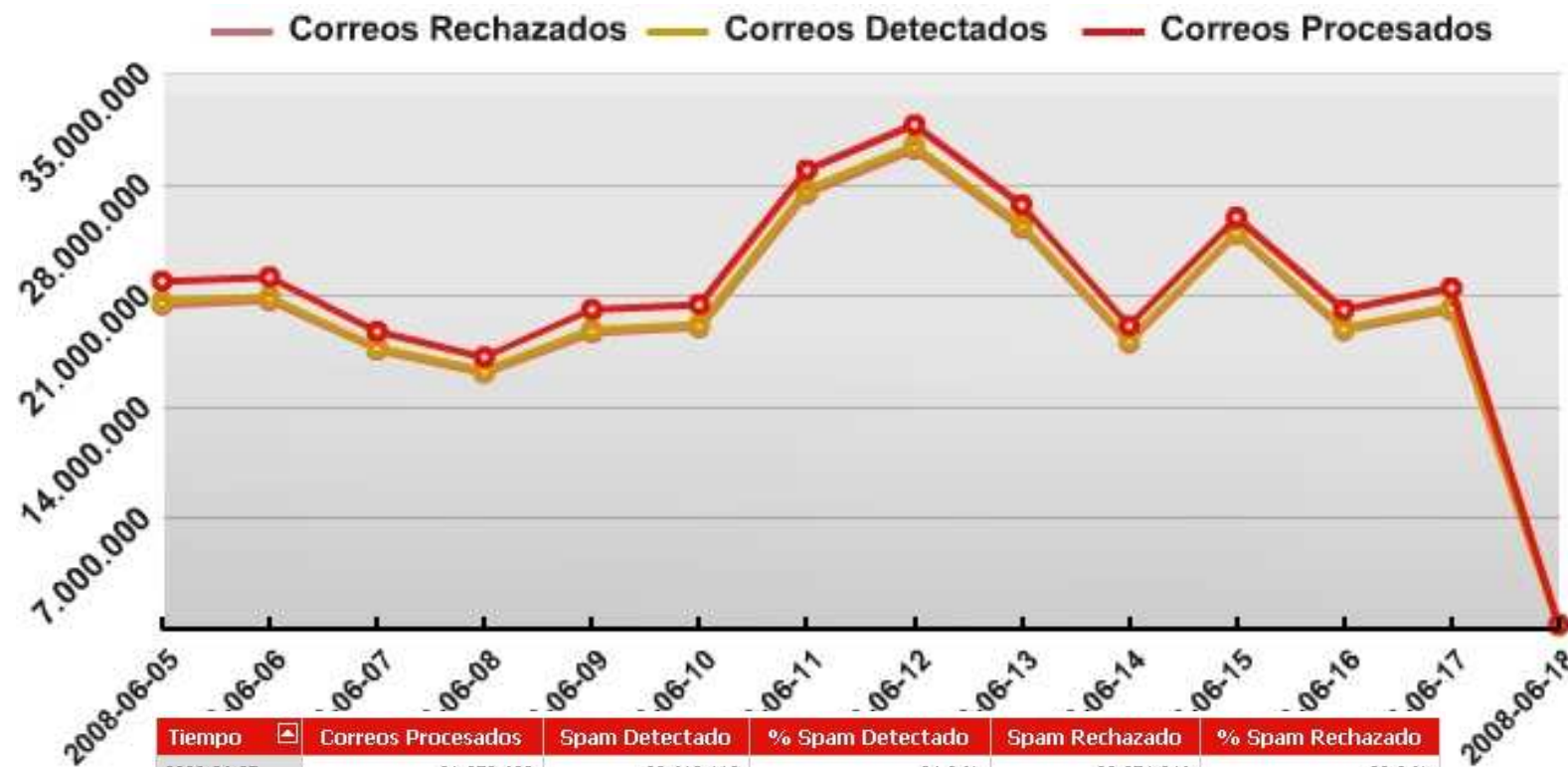
| Número | Descripción                                    | Correos Procesados | Spam Detectado <input checked="" type="checkbox"/> | % Spam Detectado | Spam Rechazado | % Spam Rechazado |
|--------|--|--------------------|--|------------------|----------------|------------------|
| 9.121  | TTNET Ttnet Autonomous System                  | 342.430            | 204.836  | 59,8 %           | 204.836        | 59,8 %           |
| 19.262 | VZGNI-TRANSIT - Verizon Internet Services Inc. | 93.915             | 73.627   | 78,4 %           | 73.627         | 78,4 %           |
| 3.269  | ASN-IBSNAZ TELECOM ITALIA                      | 136.122            | 59.641   | 43,8 %           | 59.641         | 43,8 %           |
| 4.766  | KIXS-AS-KR Korea Telecom                       | 86.385             | 55.136   | 63,8 %           | 55.136         | 63,8 %           |
| 7.470  | ASIAINFO-AS-AP ASIA INFONET Co.,Ltd.           | 88.543             | 50.722   | 57,3 %           | 50.722         | 57,3 %           |
| 6.147  | Telefonica del Peru S.A.A.                     | 75.402             | 47.855   | 63,5 %           | 47.855         | 63,5 %           |
| 5.617  | TPNET Polish Telecom_s commercial IP network   | 83.836             | 43.908   | 52,4 %           | 43.908         | 52,4 %           |
| 4.134  | CHINANET-BACKBONE No.31,Jin-rong Street        | 71.717             | 42.910   | 59,8 %           | 42.910         | 59,8 %           |
| 7.738  | Telecomunicacoes da Bahia S.A.                 | 56.485             | 32.724   | 57,9 %           | 32.724         | 57,9 %           |
| 8.167  | TELESC - Telecomunicacoes de Santa Catarina SA | 44.040             | 26.269   | 59,6 %           | 26.269         | 59,6 %           |



# Line chart: TOTAL EVOLUTION of the SPAM

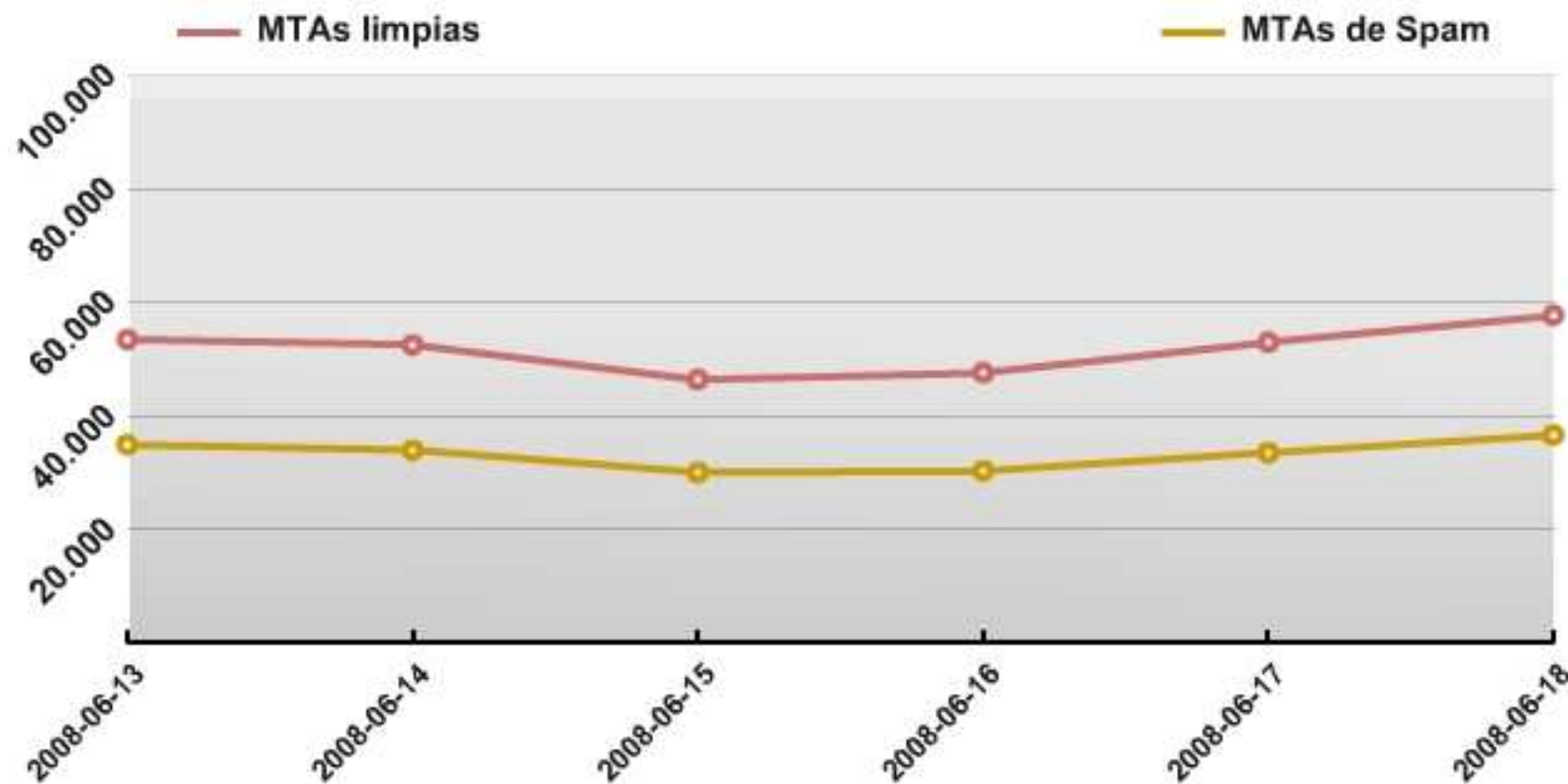


Instituto Nacional de Tecnologías de la Comunicación



| Tiempo     | Correos Procesados | Spam Detectado | % Spam Detectado | Spam Rechazado | % Spam Rechazado |
|------------|--------------------|----------------|------------------|----------------|------------------|
| 2008-06-05 | 21.872.698         | 20.612.118     | 94,2 %           | 20.374.846     | 93,2 %           |
| 2008-06-06 | 22.126.606         | 20.885.555     | 94,4 %           | 20.645.890     | 93,3 %           |
| 2008-06-07 | 18.709.085         | 17.718.849     | 94,7 %           | 17.560.832     | 93,9 %           |
| 2008-06-08 | 17.100.806         | 16.249.918     | 95,0 %           | 16.112.502     | 94,2 %           |
| 2008-06-09 | 20.094.968         | 18.833.842     | 93,7 %           | 18.632.126     | 92,7 %           |
| 2008-06-10 | 20.402.728         | 19.159.310     | 93,9 %           | 18.959.098     | 92,9 %           |
| 2008-06-11 | 28.858.352         | 27.629.027     | 95,7 %           | 27.364.198     | 94,8 %           |
| 2008-06-12 | 31.703.525         | 30.411.735     | 95,9 %           | 30.156.846     | 95,1 %           |
| 2008-06-13 | 26.676.115         | 25.443.859     | 95,4 %           | 25.203.802     | 94,5 %           |
| 2008-06-14 | 19.075.525         | 18.202.263     | 95,4 %           | 18.000.330     | 94,4 %           |
| 2008-06-15 | 25.889.555         | 25.008.162     | 96,6 %           | 24.843.303     | 96,0 %           |
| 2008-06-16 | 20.084.606         | 18.940.011     | 94,3 %           | 18.777.397     | 93,5 %           |
| 2008-06-17 | 21.450.145         | 20.253.202     | 94,4 %           | 20.059.274     | 93,5 %           |
| 2008-06-18 | 300.111            | 172.816        | 57,6 %           | 172.816        | 57,6 %           |

# Interactive line chart: MTA EVOLUTION

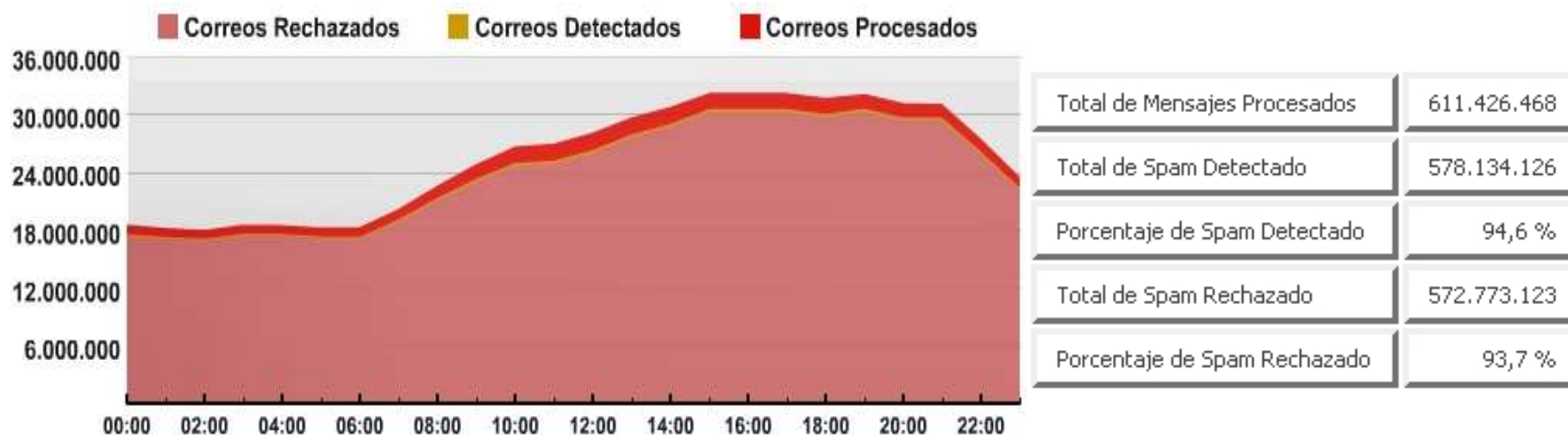


| Tiempo     | Correos Procesados | Spam Detectado | % Spam Detectado | Spam Rechazado | % Spam Rechazado | MTAs   | MTAs Spam | % MTAs Spam |
|------------|--------------------|----------------|------------------|----------------|------------------|--------|-----------|-------------|
| 2008-06-13 | 254.492            | 158.805        | 62,4 %           | 158.805        | 62,4 %           | 53.280 | 34.767    | 65,3 %      |
| 2008-06-14 | 256.860            | 154.671        | 60,2 %           | 154.671        | 60,2 %           | 52.322 | 33.809    | 64,6 %      |
| 2008-06-15 | 230.297            | 141.261        | 61,3 %           | 141.261        | 61,3 %           | 46.223 | 29.887    | 64,7 %      |
| 2008-06-16 | 219.677            | 125.764        | 57,2 %           | 125.764        | 57,2 %           | 47.423 | 30.173    | 63,6 %      |
| 2008-06-17 | 270.394            | 150.751        | 55,8 %           | 150.751        | 55,8 %           | 52.806 | 33.362    | 63,2 %      |
| 2008-06-18 | 300.111            | 172.816        | 57,6 %           | 172.816        | 57,6 %           | 57.513 | 36.491    | 63,4 %      |

# Interactive area chart: SPAM by HOUR

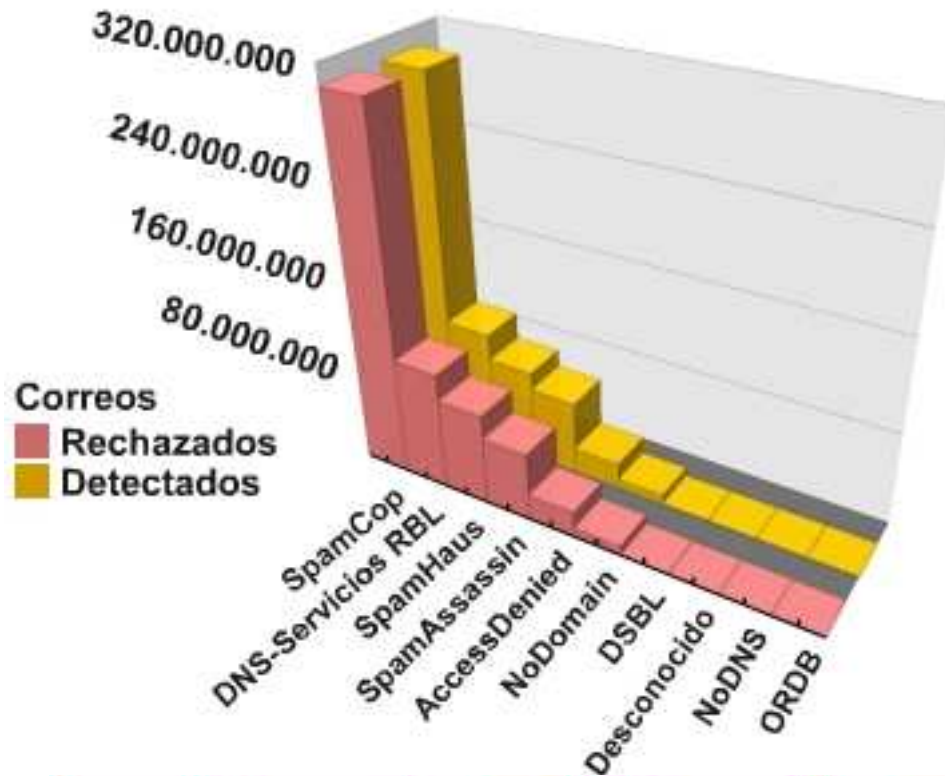


Instituto Nacional  
de Tecnologías  
de la Comunicación



| Hora  | Correos Procesados | Spam Detectado | % Spam Detectado | Spam Rechazado | % Spam Rechazado |
|-------|--------------------|----------------|------------------|----------------|------------------|
| 00:00 | 18.538.374         | 17.553.409     | 94,7 %           | 17.385.318     | 93,8 %           |
| 01:00 | 18.170.868         | 17.247.018     | 94,9 %           | 17.097.284     | 94,1 %           |
| 02:00 | 17.988.682         | 17.031.481     | 94,7 %           | 16.888.380     | 93,9 %           |
| 03:00 | 18.529.396         | 17.617.825     | 95,1 %           | 17.467.691     | 94,3 %           |
| 04:00 | 18.497.268         | 17.549.696     | 94,9 %           | 17.397.518     | 94,1 %           |
| 05:00 | 18.243.861         | 17.314.285     | 94,9 %           | 17.178.513     | 94,2 %           |
| 06:00 | 18.269.149         | 17.248.008     | 94,4 %           | 17.101.794     | 93,6 %           |
| 07:00 | 20.160.680         | 19.064.669     | 94,6 %           | 18.895.489     | 93,7 %           |
| 08:00 | 22.609.767         | 21.293.329     | 94,2 %           | 21.089.033     | 93,3 %           |
| 09:00 | 24.803.888         | 23.265.370     | 93,8 %           | 23.022.454     | 92,8 %           |
| 10:00 | 26.626.462         | 24.903.879     | 93,5 %           | 24.657.292     | 92,6 %           |
| 11:00 | 26.931.348         | 25.167.275     | 93,4 %           | 24.922.480     | 92,5 %           |
| 12:00 | 28.090.338         | 26.251.706     | 93,5 %           | 25.957.100     | 92,4 %           |
| 13:00 | 29.689.510         | 27.874.704     | 93,9 %           | 27.615.997     | 93,0 %           |

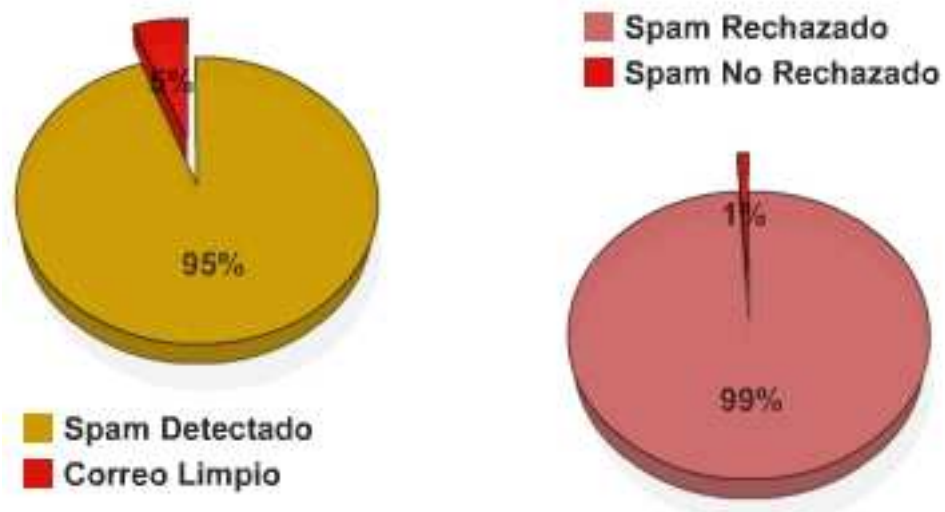
# Interactive bar chart: SPAM by METHOD



|                         |             |
|-------------------------|-------------|
| Total de Spam Detectado | 578.152.134 |
| Total de Spam Rechazado | 572.790.513 |

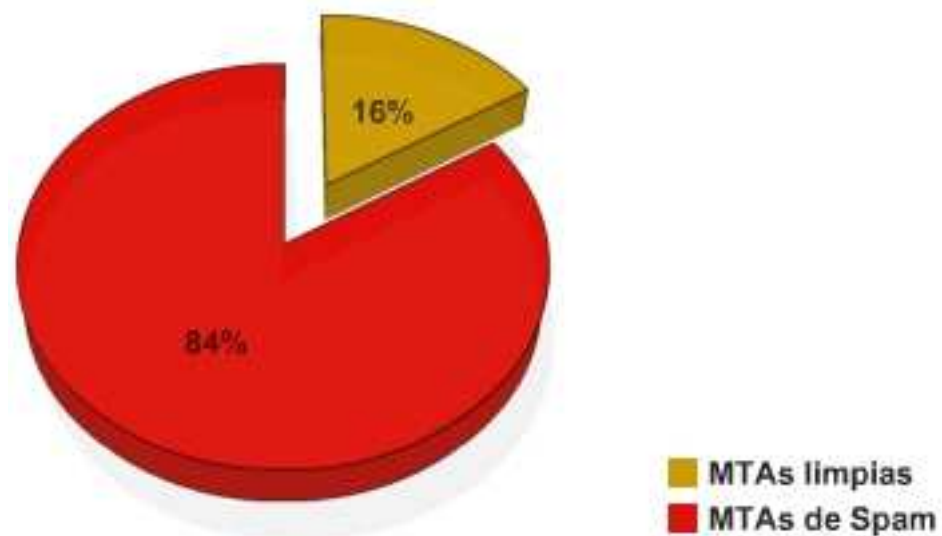
| Método            | Spam Detectado | Spam Rechazado | Número de Sensores |
|-------------------|----------------|----------------|--------------------|
| SpamCop           | 303.998.635    | 303.998.635    | 14                 |
| DNS-Servicios RBL | 101.021.293    | 101.021.293    | 11                 |
| SpamHaus          | 78.718.713     | 78.718.713     | 11                 |
| SpamAssassin      | 63.941.694     | 58.580.073     | 11                 |
| AccessDenied      | 22.078.833     | 22.078.833     | 11                 |
| NoDomain          | 7.799.976      | 7.799.976      | 11                 |
| DSBL              | 422.250        | 422.250        | 11                 |
| Desconocido       | 167.646        | 167.646        | 11                 |
| NoDNS             | 3.093          | 3.093          | 3                  |

# Interactive pie chart: SPAM TOTALS



|                              |             |
|------------------------------|-------------|
| Total de Mensajes Procesados | 611.426.106 |
| Total de Spam Detectado      | 578.152.134 |
| Porcentaje de Spam Detectado | 94,6 %      |
| Total de Spam Rechazado      | 572.790.513 |
| Porcentaje de Spam Rechazado | 99,1 %      |

# Interactive pie chart: MTA TOTALS



|                            |           |
|----------------------------|-----------|
| Total de MTAs              | 2.798.339 |
| Total de MTAs de Spam      | 2.351.856 |
| Porcentaje de MTAs de Spam | 84,0 %    |

- Client side
  - Tailored for each organization
    - Email infrastructure changes.
    - Anti-SPAM products changes
    - Anti-SPAM versions changes
    - Anti-SPAM Filter changes
  
- Server side
  - Huge amount of input data. Sampling.
  - IP information changes. Ip resolution very often.
  - Whois services response differences (RIPE, ARIN, APNIC..)

# Questions?

➡ More info:

➡ <https://ersi.inteco.es>

➡ Sensors Support. [soporte.sensores@inteco.es](mailto:soporte.sensores@inteco.es)

➡ Juan Díez. [juan.diez@inteco.es](mailto:juan.diez@inteco.es)

➡ Luis Fernández. [luis.fernandez@inteco.es](mailto:luis.fernandez@inteco.es)





**inteco**



Instituto Nacional  
de Tecnologías  
de la Comunicación

[www.inteco.es](http://www.inteco.es)