



The Future of Security
The Security of the Future?

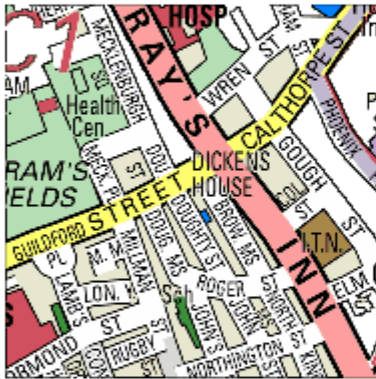
Prof Graham K Whitehead



16 bit



32 bit



64 bit



Test drive Windows Flip 3D: One of many ways to

FEAT. WOW. WIN. WOW.
Capture your own "Wow" digitally, and
upload it for the chance to win big.



Computers will not look like computers



IP is Coming!

- Too Many Legacy Systems
- Too Much complexity
- Too complicated
- Customer Confused!

What we need is:-

- A Single network that does Everything
- Not only Today, But Tomorrow as Well
- Connection to a Global Network
- Simple Services, Facilities and Intelligent Working
- Simple Connection to the Customer to remove the Confusion
- Everything Connected to Everything All the Time
- Things Talking to Things

Pay-per-View it isn't!



Wireless and security?

How Do You Find Information – Easily?



The image shows a screenshot of a Wikipedia article titled "Post-it note". The page layout includes a top navigation bar with links for "article", "discussion", "edit this page", and "history". Below this is a sub-navigation bar with "Sign in / create account" and a note: "Your continued donations keep Wikipedia running!". The article title "Post-it note" is prominently displayed, followed by the text "From Wikipedia, the free encyclopedia". A small image of a Post-it note is shown next to the introductory text. The text describes the invention of Post-it notes by 3M and their use as "sticky notes". Below the main text, there are sections for "Pop culture" and "References". The "Pop culture" section lists several instances of Post-it notes in popular media, including an auction of a Post-it note by R.B. Kitaj, a reference to Post-it notes in the TV series "Dead Like Me", a reference in the film "Romy and Michele's High School Reunion", a reference in the TV series "Sex and the City", a reference in the film "Bruce Almighty", and a reference in a "MADtv" episode. The "References" section is partially visible at the bottom. On the left side of the page, there is a sidebar with the Wikipedia logo, navigation links (Main page, Contents, Featured content, Current events, Random article), interaction links (About Wikipedia, Community portal, Recent changes, Contact us, Make a donation, Help), a search box, and a toolbox with links for What links here, Related changes, Upload file, Special pages, Printable version, Permanent link, and Cite this article. At the bottom left, there is a copyright notice: "© British Telecommunications plc". At the bottom right, there is an "[edit]" link and the BT logo.

[article](#) [discussion](#) [edit this page](#) [history](#)

[Sign in / create account](#)

Your continued donations keep Wikipedia running!

Post-it note

From Wikipedia, the free encyclopedia



A **Post it note** (or simply *Post-it*), invented and manufactured by **3M**, is a piece of **stationery** with a re-adherable strip of adhesive for attaching notes to **documents**, **computer** or other surfaces. It is available in a wide range of colors, shapes, and sizes, the most common being the (7.5-cm) square, trademark canary **yellow** with a strip of **adhesive** that enables the Post-its to be easily removed without leaving marks or residue. The names "Post-it" and "Post-it note"—as well as the logo—of **3M**, the company which **invented** and manufactures them. As a result, the terms "sticky notes" or "repositionable" or "repositional notes;" are often used as a **generic term** for any such product. 3M manufactures other products, including Post-it flags, leveraging the success of the brand. As Post-it have been driven to market by **PliMemo**, 3M markets its own software under the name of "Post-it".

Pop culture


- In 2000 the 20th anniversary of Post-it notes was celebrated by the artist **R.B. Kitaj** sold for £640 in an auction, making it the most expensive Post-it note ever sold.
- In **Showtime's** comedy-drama series *Dead Like Me*, Post-it notes are used by the reapers; they bear the names, estimated times of death (ETD), and other information about the victims.
- In the 1997 film *Romy and Michele's High School Reunion*, the two main characters, Romy and Michele, use Post-it notes to communicate with their friends.
- Season 6 of *Sex and the City* (first aired August 2003) features Carrie Bradshaw using a Post-it note to communicate with her friend.
- In *Bruce Almighty*, when protagonist Bruce receives millions of dollars, he uses a Post-it note to communicate with his friend.
- In a *MADtv* episode on **January 6, 2007**, rapper **The Game** (played by **Ice Cube**) uses a Post-it note to communicate with his friend.

References



[edit]

BT

Similar Information Exchange within Company..





Service Execution Platform
Designers' Home

Welcome [Whitehead,GK,Graham,XDT65 R](#) | [History](#) | [Preferences](#) | [Log Out](#)  

View | **Edit** | **Attachments (3)** | **Info** [Browse Space](#) | [Add Page](#) | [Add News](#)

Added by [Beggs,SL,Lowry,XSE2 R](#), last edited by [Boyle,MS,Mark,XSD2 R](#) on Apr 03, 2007 ([view change](#))

Labels: (None) [EDIT](#)  

Designers' Home

Welcome to the Service Execution Platform Designers home page. This area of the site is a working area to document the evolving design of the Service Execution Platform.

Service Execution Platform Designers' Pages

1. [SEP Platform Design](#)
2. [SEP Design Patterns](#)
3. [SEP Design Documents](#)
4. [Directory and Profile](#)
5. [Authentication](#)(access protected)
6. [SEP Common Capability Data Model](#)
7. [SEP Design Info Sessions](#)
8. [Key Contacts](#)
9. [SEP Design Useful Links](#)
10. [BT Contacts Intercept Workspace](#)
11. [Hot House Support](#)
12. [SEP Design Bits N' Pieces Workspace](#)
13. [FVC 3.2 Workspace](#)
14. [Rapid Service Delivery Workspace](#)
15. [Security](#)

Join in

[Discussion Topics](#)
[Meetings](#)


Latest News


No news found.

Shortcuts

- ★ [Common Capability Model](#)
- ★ [Capability Design](#)

Recently Updated

by [Madhavan,M,Maya,XWGC C](#)
(1 hour ago)
 [SEP Security User Stories](#)

by [Madhavan,M,Maya,XWGC C](#)
(1 hour ago)
 [Security](#)

SEP End-to-end Design

Your Staff Should Know What is Happening

BT Home | BT A-Z | BT Today | Services | BT Help | Search BT Intranet or Directory for Go >

Employee Share Plans Centre

BT Share Plan

Welcome

Home UK allshare UK directshare UK

About Shareprice Focus
Share Price Graph
Share Price Download
Share Price Calculator
Share Price Information

Share Price Focus

These prices are up to date. **Warning - delay in information is a critical issue.**

BT Group plc Share Price

313.8 (-0.7) at 08:55

Share price summary

Last Close	Day Change	High
314.5	0.5	315.0

FTSE-100 Index

Current
6468.4

Other Shares on BT Share Plan

- AT&T
- British Sky Broadcas
- Cable and Wireless
- Carphone Warehou
- Deutsche Telekom
- France Telecom SA
- HBOS PLC
- Virgin Media Inc
- Weddell Group Plc

Straight talk



My communication style is direct. I say things as I believe in them.

This website will be a core part of our communication. It is important that we deal with our customers ourselves in. So you'll see a focus on customer satisfaction - getting it right.

Let's start with a bit of history on this site but it will continue to evolve as you know.

Through my regular column I will share the things that have made me stop and think.

Remember, you can contact me directly and will respond to your queries.

Regular column



Positive Energy

It is fantastic to start 2007 knowing that the City is positive about BT.

There are many reasons for this positive sentiment. The market likes the consistency of our strategy and sees evidence that BT is transforming from a traditional telco to a leader in the delivery of converged network services - right across the globe.

It also sees the potential that exists to increase shareholder returns through exploiting 21CN, BT Vision, convergence and our global capabilities. Our financial performance is building credibility as we continue to generate cash and achieve cost reductions across the company.

If 2006 was about confidence and strategy then 2007 must be about delivery on all fronts.

In the UK, we have a tremendous opportunity to capitalise on the fact that we now have 10 million wholesale broadband connections. We have to ensure that innovative products that run over broadband - like BT Vision and BT Fusion - work flawlessly.

We have won some truly amazing deals across the globe and have to both deliver on the promises made at the same time as increasing profit margins. Now that 21CN's journey has well and truly started, we have to maintain the momentum by achieving every milestone.

Of course, customer experience remains the most important differentiator for BT. We have to get it absolutely right this year across all market sectors.

We have to deliver exactly what customers ask for. We have to do things right the first time - and do it when we promised to. And if something goes wrong, we have to admit it and fix it quickly while keeping the customer informed.

As we look to the year ahead, please seize on opportunities to improve. Be impatient to move things forward, do your best to get things implemented fast.

By not settling for second best, you will bring positive energy to shaping BT's success in 2007.

- Home
- About me
- My team
- Regular column
- Archive
- News
- BT values
- e-Ben
- Talkback
- Strategy
- Speeches
- Online chat

Navigating Around the Company

The screenshot shows a web browser window displaying the BT Directory website. The browser's address bar shows the URL <http://directory.intra.bt.com/>. The page header includes navigation links for BT Home, BT A-Z, BT Today, Services, and BT Help, along with a search bar. The main content area is titled "Directory" and shows search results for the name "graham whitehead".

Search Results 1 person found

- 1 Prof Graham Whitehead (BT Exact, XDT65)**
Principal Consultant
BTNet tel: 164 6961
Tel: 01473 646961

Assignment Managers Mr Jeff Collison

2 Levels above | All levels above
Opened 1 Level: [More >>](#)

- [Sir Christopher Bland \(CGEA\)](#)
Chairman
- [Mr Ron Verwaayen \(CGEB\)](#)
Chief Executive Officer BT Group
- [Mr Andy Green \(CGEI\) Assignment Mgr](#)
CEO BT Global Services
- [Mr Al-noor Ramji \(XP\) Assignment Mgr](#)
CEO One IT
- [Ms Christiane Wulliamie \(XB\) Assignment Mgr](#)
Director of Resource Management
- [Mr Brendan Kennedy \(XDT\) Assignment Mgr](#)
Director, ICT Transformation
- Mr Jeff Collison (XDT6) Assignment Mgr**

13 Staff:

- [Mr Paul Challener \(XDT62M\)...](#) Assignment Mgr
Head of Networks & Testing Portfolio
- [Mr Justin S Clark \(XDT65\)...](#)
Business Consultant
- [Mr David Hawthorne \(XDT67\)...](#)
ICT Regional Development
- [Ms Siobhan Hayes \(XDT62\)...](#) Assignment Mgr
- [Mrs Lynn McGowan \(XDT6\)...](#)
- [Mr Gerard Marley \(XDT61M\)...](#) Assignment Mgr
- [Mr Dave Mills \(XDT66M\)...](#)
One IT ICT Transformation
- [Mr Mark Peberdy \(XDT65\)...](#)

Single Sign-in is Essential..

21C Authentication: Login

The application you are accessing is now protected by 21C Authentication.
Please use your iUser credentials for authentication.
If you require further information, please select the Help button.

User Name:

Password:

[Forgotten your password?](#)

Sign On

Change Password

21C Authentication: Warning Screen

British Telecommunications plc

WARNING: You have accessed the [21C Authentication Service](#) operated by BT. You are required to have a personal authorisation from the system administrator before you use this computer and you are strictly limited to the use set out in that written authorisation. Unauthorised access to or misuse of this system is prohibited and may constitute an offence under the Computer Misuse Act 1990

If you disclose customer or BT information without authority you may be sacked and/or prosecuted

Are you authorised to use this computer as detailed above? (Yes/No)

Yes

No

To All Company Facilities and Services

BT Home | BT A-Z | BT Today | Services | BT Help | Search BT Intranet or Directory

BT Exact

gatekeeper >EXIT >A-Z >FEEDBACK

menu | command | favourites

select an option to access the application

- EQ2 - UK Online
- Expenses
- Buy-site
- Enterprise System (New)
- Purchasing Online
- Flight Booking-UK
- people
- Car Hire (Hertz)UK
- people
- eOrganisation
- ePayslips
- Menu 1
- list other services
- My Mail

BT Home | BT A-Z | BT Today | Services | BT Help | Search BT Intranet or Directory

Graham Whitehead connected 09:17 18th April 2007

BT Exact

gatekeeper >EXIT >A-Z >FEEDBACK >HELP >SYNCHRONISE >CUSTOMISE

menu | command | favourites information zone

select an option to access the application

- Return to the Main Menu
- Access Cards/Keys (BASOL)
- Amadeus
- Aperture
- Asset Management
- BT People Store
- BT Security Portal
- CITS
- Callout
- Company Car
- Ordering
- DACS
- Duct Motor Repairs
- ES Timesheets Direct
- EYP
- GK Front Office
- HASERD
- Hospitality
- ITJobs
- Jet
- Leadership Coaches
- LearnBT Registration
- Literature Ordering
- MES - Admin
- MMP review
- MarkView
- MarkView SSI Home
- Midrange Estate
- Survey
- Old expenses claims
- OneBT Clarity
- OneIT
- ProgrammeAssignment
- P11D/P46/Mileage
- Strmt
- Radio Prog Supply
- Chain

click a bulletin icon for further information

- I-Procurement - Choosing the Correct Supplier
- Gatekeeper Outages
- Reduce the cost of meetings. Consider BT Conferencing

personal information

There are no messages for you



Innovation Takes Time..



Spencer Silver & Art Fry

Instantly Obtainable Stamps..



This postage was printed using
www.royalmail.com/onlinepostage

Return Address:
Graham K Whitehead
BT Exact
19 Hazel Drive
IPSWICH
IP3 8RF
United Kingdom

BY AIR MAIL
PAR AVION

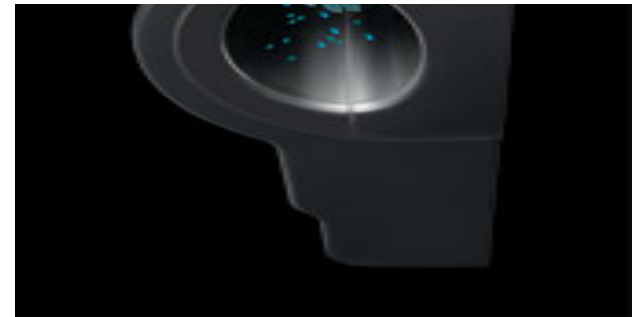


POST BY
05.04.07



Michael Thole
BT Global Services
Account Director
Hohenzollernring 127-129
Hamburg
22763
GERMANY

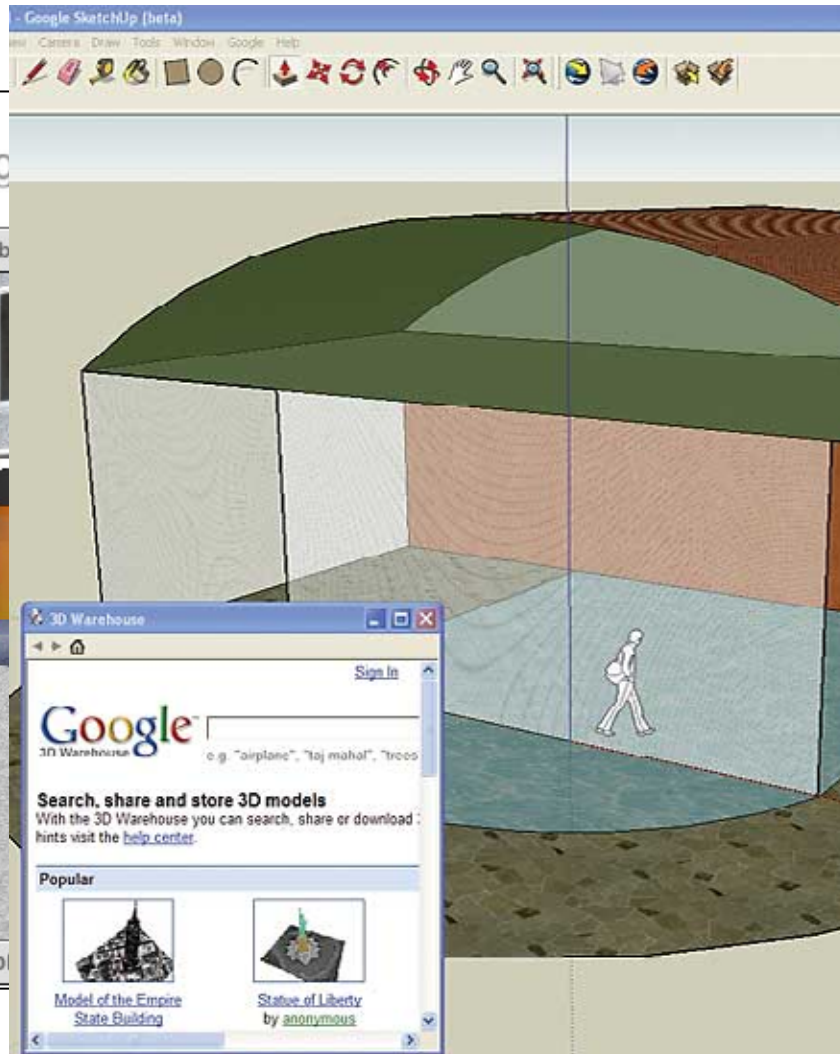
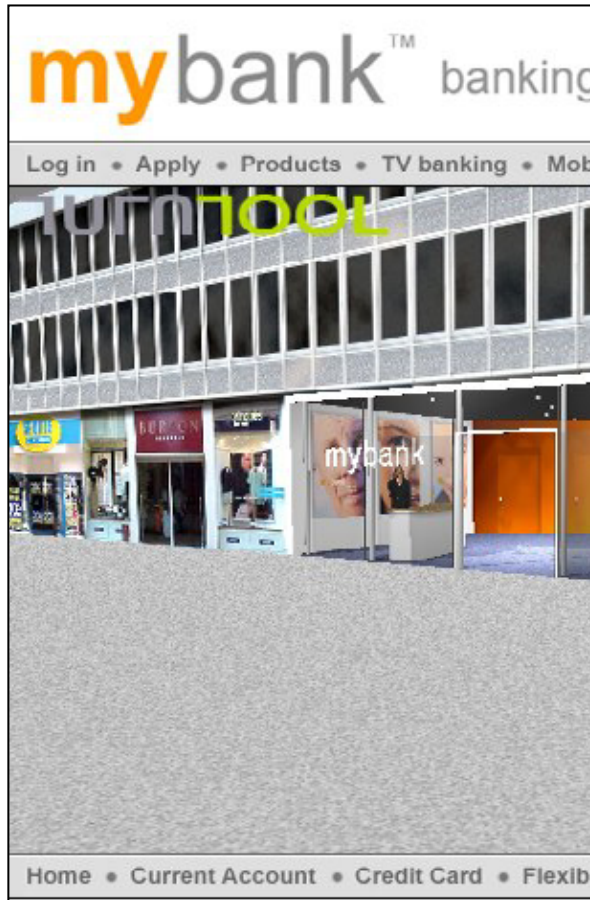
Just a Machine to Clean Floors...



Your Home Will Change



The Bank in Cyberspace



Can We Meet in Cyberspace?



Delivery of Information will be by Mobile



PC Monitor



We Will Carry Information..



DigiPad never be out of contact...



Instant Connection to Everything Anywhere



Information in Clothing..



Clothes Currently in the Lab



Information Anywhere and at Anytime...



Who is the Real Security Problem?



LESANDORANGES

NDORANGES

OPPRSS

S

AA



AARD3G3LNN
 OPRR2S

~~AAAB2370~~
~~614735~~

Personal Details

Surname: Middle Initial: Title:

Forename: Gender: Date of Birth:

Logout
Clear Contents
Change Profile
Authenticate

Profile Name: Simple Scored Profile (v1.0) Customer Reference:

Address Passport Electricity Supply Number Land Telephone Driving Licence Credit/Debit Card Births Index Results

Mothers maiden name:

Country of registration:

Personal Details

Surname: Middle Initial: Title:

Forename: Gender: Date of Birth:

Logout
Clear Contents
Change Profile
Authenticate

Profile Name: Simple Scored Profile (v1.0) Customer Reference:

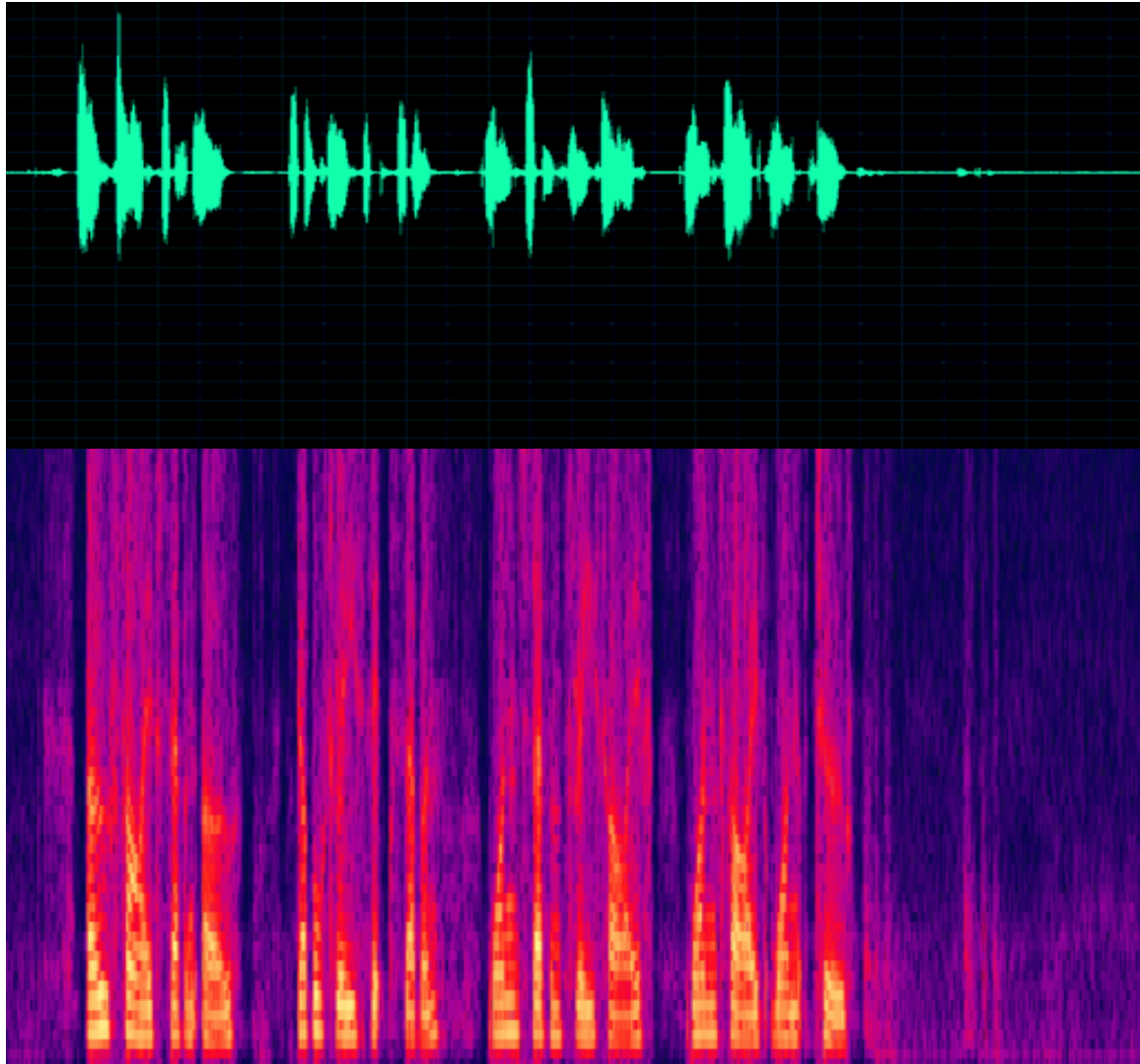
Address Passport Electricity Supply Number Land Telephone Driving Licence Credit/Debit Card Births Index Results

[Printer Friendly Version](#)

-  Sanctions
- 1001 Name not in the Office of Foreign Assets Control sanctions list.
 - 1011 Name not in the Bank of England sanctions list.
 - 1021 Name not in the Politically Exposed Persons sanctions list.

Interrogating Information

Voiceprints



VOICE!



Speaker 1



Speaker 2



Speaker 3

With IPv6 everything can have an identity



When Things Have a Presence



Printable Identities....



When the Boxes Know Where They are going...



Communications Everywhere



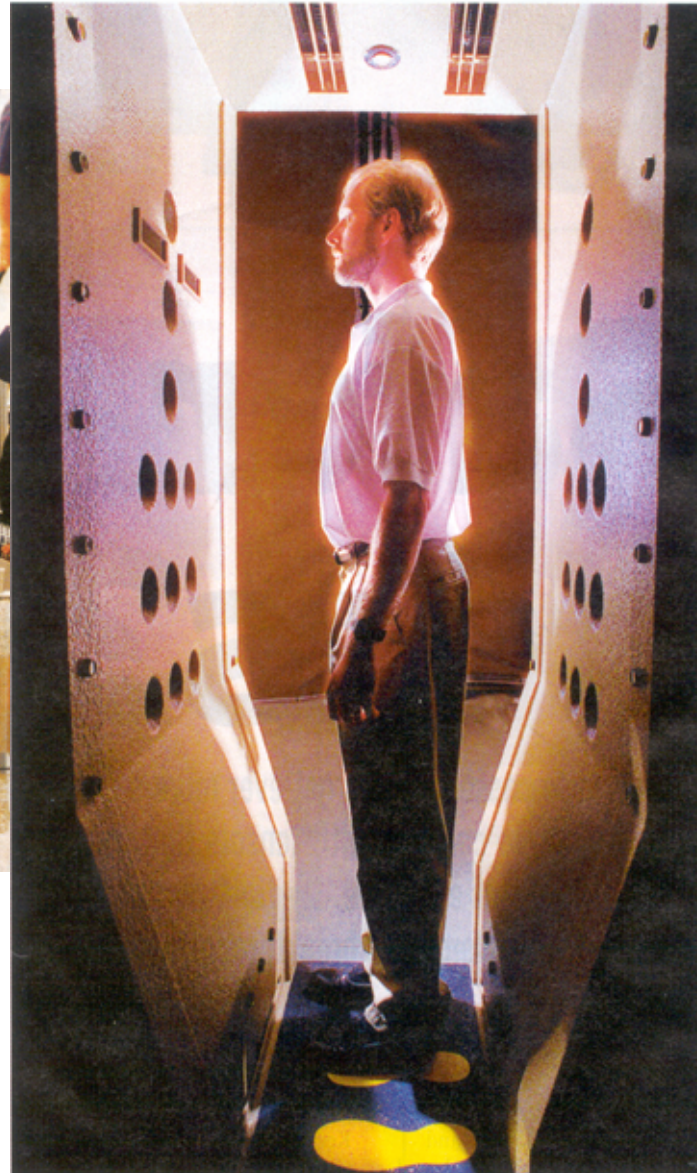
Security
Becomes
Full Time



Security Becomes...



Personal!



Security Becomes Intimate!



Phishing!

From: NatWest Bank [mailto:custservice_774@natwest.com]

Sent:

To:

Sub:

HSBC  **The world's local bank**

From: U.S. Bank [mailto:antifraud.ref.num21433314446863@usbank.com]

Sent: 09 August 2004 04:54

To:

From: Fleet bank [mailto:user-billing10@fleet.com]

Subject: official Notice for all Fleet bank customers!



Dear Fleet bank user,
During our regular update and verification of the user data, you
must confirm your credit card details.
Please confirm your information by clicking link below:

http://cards.fleet.com/card_features/cardmember_access.shtml

Regards, FleetBank

© 2004 U.S. Bancorp

If the
bank
This

This
malic
cach
foun

ware
e of

Technology is Changing.....

Are You?

Is Your Identity Changing?

Who Is Responsible?



graham.whitehead@bt.com

BT Exact

Adastral Park

Martlesham Heath

Ipswich

IP5 3RE



Bringing it all together