



# Network Transformation - Impact on cert teams

Anu Puhakainen  
Michael Skogberg

# Presentation outline

---

- › Network transformation
- › Emerging threats
- › Impact on CERT teams way of working
- › Key conclusions





# NETWORK TRANSFORMATION

# Network transformation

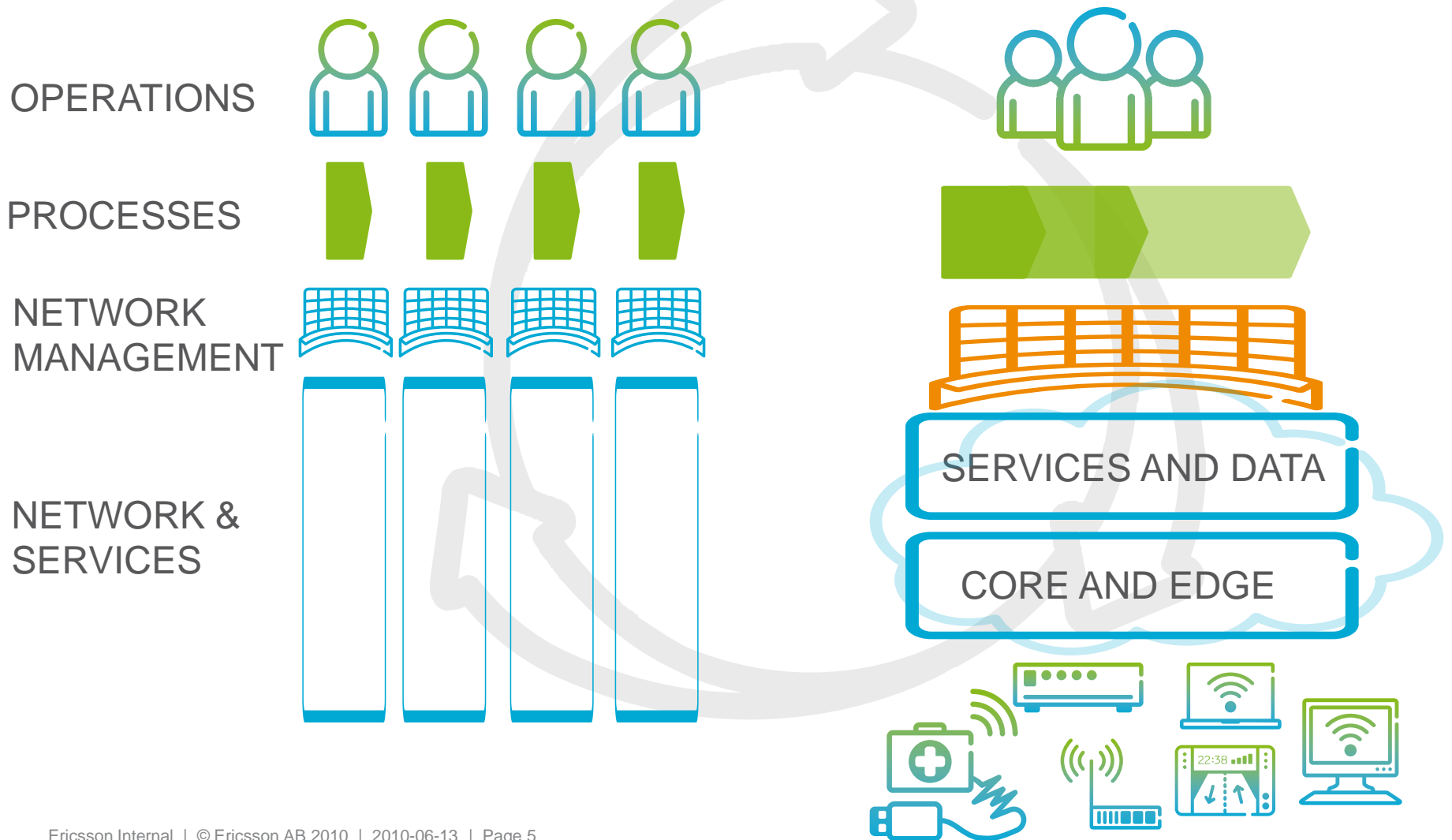
FROM

- › Building new networks
- › Traditional, proprietary networks
- › Hardware

TO

- › Network transformation and convergence
- › All-IP mobile broadband
- › Agility in software and services

# Network transformation



# Connected home



- › **Interoperable devices**

- › Appliances

- › Sensors

- › **New services**

- › Remote monitoring & control

- › Surveillance

# 50 billion connections 2020





# EMERGING THREATS



# Paradigm shifts

Services  
Consumption



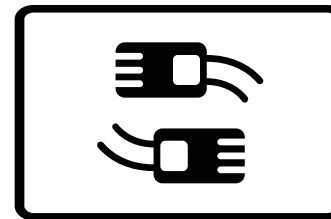
Fixed first

Device  
Momentum



Shared

Access  
Bandwidth



Unlimited



Mobile First

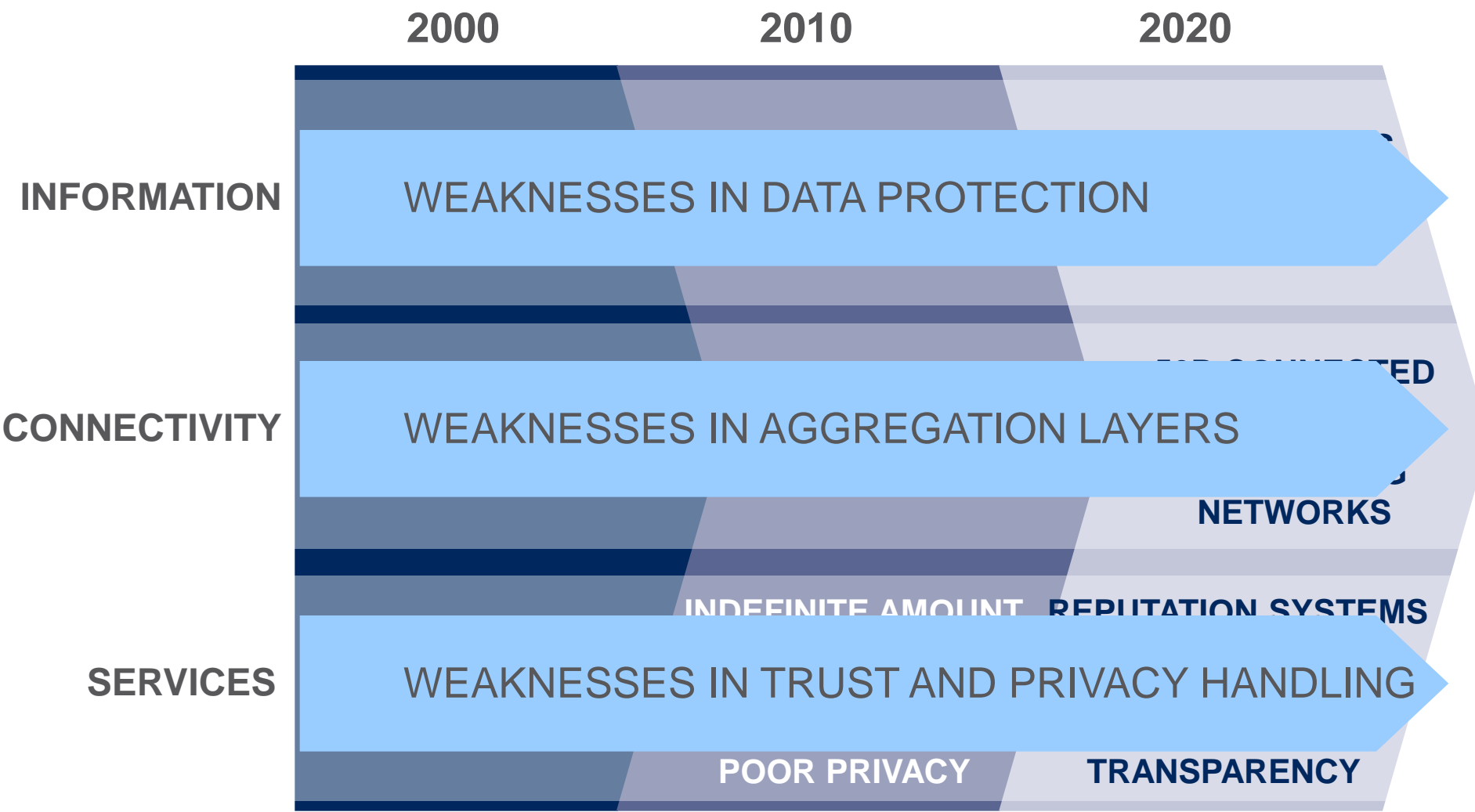


Personal



Limited

# Emerging threats



# CONCLUSIONS

---



Attacks shift towards service and DATA layer



Wide attack surface, NO GEOGRAPHICAL BOUNDARIES



TRUST AND PRIVACY ISSUES INCREASING

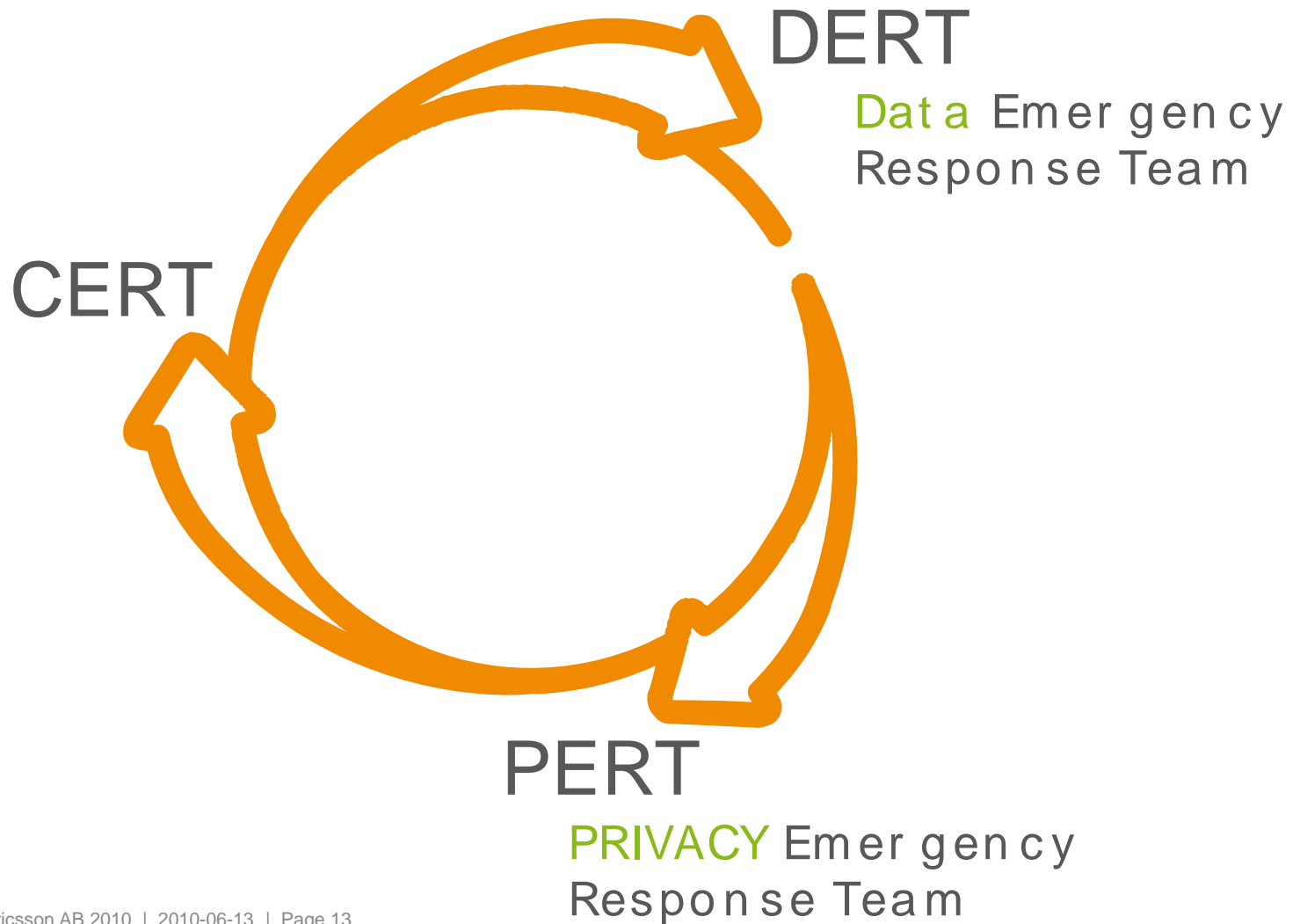




# Impact on cert teams way of working

# CERT TRANSFORMATION

---



# Be prepared for

---

Global  
Collaboration  
&  
CERT  
ecosystem

- › Incident propagation
- › Incidents across the borders
- › Incidents in the cloud
- › Interoperability of CERT teams, 24/7
- › Different type of CERT teams required

# Be prepared for

VMaaS  
IRaaS

- › Incident response not core competence for all new players
- › Increase in vulnerability information and coordination
- › Service levels for incident response and vulnerability management

Skill  
development

- › Access to information, disinformation and corrupted data challenge forensics
- › New threat scenarios require special expertise and new tools
- › Social skills

# KEY CONCLUSIONS

---



Increased exposure to attacks due to Network transformation



Privacy and trust challenges



VMaaS and IRaaS will emerge



CERT collaboration and ecosystem becomes A necessity







**ERICSSON**